



**country..**  
**arts sa**

# **Annual Report**

## **2009-10**

September 2010

Country Arts SA  
2 McLaren Parade, Port Adelaide, SA 5015  
Telephone 8444 0400 / facsimile 8444 0499  
[www.countryarts.org.au](http://www.countryarts.org.au)  
ABN 63 908 129 329

ISSN 1833-1033

# Country Arts SA Annual Report

---

## Table of Contents

<b>About Country Arts SA</b>	<b>Page 3</b>
<b>Country Arts SA Major Achievements 2009-10</b>	<b>Page 4</b>
<b>Chair's Report</b>	<b>Page 7</b>
<b>Chief Executive Officer's Report</b>	<b>Page 10</b>
<b>Strategic Goal 1</b>	<b>Page 14</b>
• Regional Centre of Culture Program	Page 14
• Performing Arts Touring Program	Page 17
• Visual Arts Touring Program	Page 20
• New Land Gallery	Page 21
• State Forum	Page 21
<b>Strategic Goal 2</b>	<b>Page 23</b>
• Sustainable Community Cultural Development	Page 23
• Community Partnership Support	Page 28
• Learning Connections	Page 28
• Local Stages	Page 29
• Dance N Action	Page 31
• Whyalla Art Prize	Page 33
• Corporate Partnerships	Page 34
• Advocacy	Page 35
• Regional Staffing Partnerships	Page 35
• Arts Partnerships and Collaborations	Page 36
<b>Strategic Goal 3</b>	<b>Page 37</b>
• Performing Arts Centres	Page 37
<b>Strategic Goal 4</b>	<b>Page 41</b>
• Financial Issues	Page 41
• Management of Human Resources	Page 42
• Strategic Planning	Page 46
<b>Auditor General's Statement</b>	<b>Page 48</b>
<b>Financial Statements</b>	<b>Page 51</b>
<b>Appendices</b>	
A - Performing Arts Activities	Page 87
B - Visual Arts Activities	Page 91
• Visual Arts Touring	Page 92
• New Land Gallery Exhibitions	Page 94
C - Theatre Usage Summary	Page 96
D - Grants paid for 2007- 08	Page 98
E - Organisational Structure	Page 114
F - Staff Profile	Page 116
G - Trustees, Board Members and Staff	Page 123

## About Country Arts SA

---

Country Arts SA provides dynamic leadership and innovative arts programs that enrich community culture and contribute to the growth of sustainable regional and remote communities.

Country Arts SA's strategic goals are to:

- deliver a diverse program of professional arts to a broad range of regional and remote audiences
- encourage and foster cultural and artistic growth in regional and remote communities
- develop, operate and support arts and cultural facilities across regional South Australia
- maintain a creative efficient and successful organisation that is a leader in the arts in Australia

Country Arts SA's commitment to the strategic objectives of the Government of South Australia, in particular the targets of the South Australian Strategic Plan, is demonstrated in Country Arts SA's delivery of arts programs and services, including:

- managing and operating performing arts centres, located at Whyalla, Port Pirie, Renmark, Mount Gambier and Noarlunga, thereby growing prosperity;
- developing performing arts touring programs for the performing arts centres and other regional communities;
- developing and managing visual arts touring programs with a focus on creative education;
- developing and managing a program of activities focused on the designated regional centre of culture
- supporting the development of artistic achievement within the regions through theatre and dance development programs
- developing partnerships with arts and non-arts organisations to attain sustainability;
- managing a variety of arts development and community artist funding programs, thereby fostering creativity and expanding opportunity;
- advocating for the continuing development of the arts and volunteering in country South Australia with a view to building communities and strengthening social networks;
- supporting projects focusing on creative solutions to regional environmental issues;
- providing an arts information and advisory service to regional South Australian with a view to expanding opportunity;
- developing Indigenous and Multicultural arts development strategies, thereby expanding opportunity; and
- developing sustainable arts and well-being programs to meet developing health challenges particularly regarding young people and the aging, thereby improving well-being.

Country Arts SA is a South Australian Government Statutory Authority and operates under the provisions of the South Australian Country Arts Trust Act (1992). Country Arts SA employs around 64.94 full time equivalent staff. It has a very decentralised organisational structure with much of its workforce located in regional South Australia.

## Major Achievements 2009-10

---

- Attracted audiences of almost 520,000 to Country Arts SA sponsored arts performances and activities throughout regional South Australia.
- Presented 412 live performances and 1,367 film screenings in Country Arts SA operated arts centres situated in Whyalla, Port Pirie, Renmark, Noarlunga and Mount Gambier, attracting audiences of 174,045.
- Presented 97 performances of 15 touring productions as part of a comprehensive state-wide Performing Arts Touring program, attracting total audiences of over 18,346.
- Presented 15 performances plus 10 film screenings as part of a statewide matinee touring program and programs specifically designed for young people at Country Arts SA's Performing Arts Centres.
- Toured 12 exhibitions of contemporary arts and craft across regional South Australia and interstate, which were viewed by almost 85,000 people.
- Displayed the work of 55 artists in 10 exhibitions at Country Arts SA's New Land Gallery and Port Adelaide office foyer, with a total audience over 11,000.
- Approved 120 grants totalling \$459,036 to regional community groups and individuals to support arts and cultural development activities for an estimated 13,000 participants and 214, 000 audience members throughout regional South Australia.
- Delivered the first 6 months of the 2010 Regional Centre of Culture Program, Ripples Murray Bridge, which saw over 21,000 people involved in 46 skills development workshops, 30 visual arts events and activities and attending 20 performances of 13 performance based events.
- Presented the Adelaide Symphony Orchestra on the Murray Bridge Golf Course attracting an audience of over 5,500 people. The evening also saw the culmination of Craig Walsh's two month residency at Murray Bridge with his stunning "Humanature" illumination project.
- Celebrated the 25th Birthday of the Middleback Theatre with festivities and the production of a commemorative DVD.
- Built on the success of Country Arts SA's Dance 'n' Action program, and in addition to continuing a comprehensive workshop and performance program in the Riverland, established a series of skills development workshop programs in the Far West of South Australia.
- Created and produced new works through Country Arts SA's Local Stages Program, which included the highly successful:
  - dance and theatre work "A Country Dance" which was devised by Choreographer Gavin Clarke and Visual Artist Joshua Fartch. This work toured to 8 communities across regional South Australia; and
  - music performance "Nosferatu" created by Matthew Timmis, which saw 15 members from the Desert Voices Choir and 15 musicians perform Matthew's

original sound track to the 1922 classic horror film “Nosferatu” as part of the 2010 Desert Fringe Festival in Port Augusta

- Through Country Arts SA’s Local Stages program, and with the support of the Australia Council, commenced a digital arts project which will see three technologists build Country Arts SA’s capacity to develop a collaborative on line template for the evolution of new work and build the organisation’s capacity to house and deliver new on line content.
- Transformed the theatre usage and audience numbers at the Hopgood Theatre, Noarlunga, which saw 19 commercial promoters present performances in the Theatre and at the same time increased local usage of the theatre by 8% (up to 114 performance days).
- Achieved 92 commercially promoted performances across Country Arts SA’s five Performing Arts Centres, which represented an increase of over 100% on the previous year.
- Continued to build professional arts staffing partnerships by renewing arrangements with the City of Port Augusta, the Tatiara District Council and with the Barossa Council and by establishing a new partnership with the District Councils of Ceduna and Streaky Bay.
- Established a new staffing partnership with the Indigenous Cultural Corporation (a Division of the Department of Environment, Water, Heritage and the Arts) which will enable Country Arts SA to establish a new statewide position of Indigenous Arts and Cultural Development Officer.
- Following on from a Commonwealth Grant of \$5 million to the City of Mount Gambier, supported the State Government in providing a one off capital grant of \$500,000 to enable a major redevelopment of the Riddoch Art Gallery.
- Continued to support the Port Pirie Regional Gallery and the River Lands Gallery in Berri.
- Commenced the process to establish the Riddoch Art Gallery, Mount Gambier as an independent community owned and managed organisation.
- Invested almost \$650,000 as part of an ongoing capital redevelopment program across Country Arts SA’s four regionally based arts centres.
- Continued to roll-out the *Learning Connections* strategy in conjunction with the Visual Arts Touring Program, with the inclusion of new education kits, professional development workshops for teachers and practical workshops for artists.
- Staged the 6<sup>th</sup> South Australian Regional Arts Forum (Creative Stimulus) which was held in Murray Bridge in November 2009 attracting approximately 120 delegates.
- Was a key stakeholder in the national Regional Arts Australia forum which was held in Canberra in November 2009 and was convened to discuss the National Consultation undertaken by Regional Arts Australia in early 2009.
- Continued partnering with a number of businesses interested in delivering positive outcomes for regional South Australia including ETSA Utilities, Regional Express Airlines, ElectraNet, International Art Services and Portside Mitsubishi
- In collaboration with the City of Whyalla delivered the City of Whyalla Art Prize, with the 2009 event recording the largest number of entries to date.

- 
- In association with the Blue Heeler national touring network, delivered the April 2010 Long Paddock Forum in Parramatta NSW
  - As part of the Blue Heeler network, managed the 16 week national tour of Patch Theatre's production of The Fastest Boy in the World.

## Chair's Report

---

I was appointed to the position of Chair, Country Arts SA on 1<sup>st</sup> February 2010. I replaced Mr Steve Grieve who completed his term as Chair of the organisation. I would like to acknowledge Mr Grieve's contribution to the growth and development of Country Arts SA over his period as Chair.

I am full of admiration for his work and the success he achieved over the six years he led the organisation. There is no doubt I will have big shoes to fill in leading the organisation into the future.

I am looking forward to the challenges ahead and I am confident that, given Country Arts SA's relatively strong financial position and its commitment to the delivery of arts programs across regional South Australia, the organisation can continue to build on its success to date.

In August 2009 Country Arts SA once again supported the South Australian Living Artist (SALA) Festival. Country Arts SA is proud to have been a partner with the SALA Festival for a number of years and can now boast a very strong and successful regional component of, what is the only truly statewide arts festival in South Australia.

In September 2009 Country Arts SA won a South Australian Ruby Award for the 2008 Port August Regional Centre of Culture Program and the South Australian Business in the Arts Foundation (AbaF) Award for its corporate partnership with Babcock and Brown Power, which had supported the Port Augusta Regional Centre of Culture Program.

These wonderful awards were a fine reward for what has undoubtedly been the most successful regional arts initiative ever undertaken by Country Arts SA. I am convinced that the 2008 Regional Centre of Culture Program has transformed the Port Augusta community. The outcomes from the Regional Centre of Culture Program have provided a new impetus for the development of a strong arts and cultural program through both the Port Augusta City Council and the Port Augusta community in general.

In October 2009 Country Arts SA, in partnership with the Whyalla City Council, delivered the 2009 Whyalla Art Prize. The 2009 event was the largest and most successful Whyalla Art Prize exhibition ever presented. In many respects the wonderful exhibition which was displayed in the foyer of the Middleback Theatre highlighted the need for a high quality visual art space to be established in Whyalla. Country Arts SA has been pleased to support a State Government financial commitment of \$400,000 to support the development of a Whyalla Art Gallery. I sincerely hope that in time for the 2011 Whyalla Art Prize, a new gallery is open and ready for business.

In November 2009 Country Arts SA launched its largest ever Mainstage Performing Arts Touring Program which is being presented throughout the 2010 calendar year in its five performing arts centres located in Whyalla, Port Pirie, Renmark, Mount Gambier and Noarlunga, and in the community operated venue in Port Lincoln.

To be able to boast major national companies touring regional South Australia including the Melbourne Theatre Company, The Dancers Company of the Australian Ballet and Circus Oz, and also to see the State Theatre Company of South Australia touring the State demonstrates the keen interest in the arts across regional South Australia.

There is also no doubt that performing arts programs of this calibre confirm Country Arts SA's commitment to ensuring that both comprehensive and high quality arts programs are delivered across the State on a regular basis.

The 2010 calendar year saw the commencement of the Regional Centre of Culture Program – Ripples in Murray Bridge. Country Arts SA is pleased to be working collaboratively with the Rural City of Murray Bridge in delivering a year long program of arts and cultural events and activities for the benefit of the Murray Bridge community.

The two highlights for the period January to June 2010 were the wonderful outdoor performance by the Adelaide Symphony Orchestra to an enthusiastic audience of over 5,500 people and the official opening of the Murray Bridge Town Hall and Art Gallery.

This significant redevelopment of an arts and cultural facility in Murray Bridge will serve the community well for at least the next 50 years and, importantly, will be a continuing reminder of the success of the 2010 Regional Centre of Culture Program.

In March 2010 Country Arts SA was proud to celebrate the 25<sup>th</sup> Birthday of the Middleback Theatre in Whyalla. In particular it was extremely pleasing to be able to celebrate this important birthday through a significant grant from the State Government which has seen a comprehensive refurbishment of the theatre's auditorium and foyer undertaken.

In April 2010 Country Arts SA was also pleased to be able to support a significant grant of \$500,000 through the State Government to assist in a \$6 million dollar redevelopment of the Riddoch Art Gallery and surrounding environments. Country Arts SA looks forward to working with both the City of Mount Gambier and the Board of the Riddoch Art Gallery in seeing the building development completed and a redeveloped and larger Riddoch Art Gallery working for the benefit of the Mount Gambier and wider Limestone Coast communities.

Even though I have only been in the position of Chair for five months I have been pleasantly surprised by the strong interest and vibrancy in the arts and local community development I have seen across regional South Australia.

To evidence this support for the arts, over the 2009-10 year Country Arts SA's five performing arts centres presented over 1,700 live performances and film screenings and achieved audiences of over 174,000 people. When the populations of the communities that live in and around each of these centres is taken into consideration, it is clear that these centres are absolutely crucial community assets which play a significant role in the ongoing development of community pride and wellbeing.

I would particularly like to express my appreciation to Trustee Anne Levy who completed a six year term with Country Arts SA in April 2010.

I would also like to acknowledge Country Arts SA's long serving Chief Executive Officer, Mr Ken Lloyd AM, who has recently announced that he will be stepping down from the position in August 2010.

Mr Lloyd is regarded as one of Australia's best arts administrators and has been at the forefront of the growth and development of the regional arts sector nationally. I would like to wish Mr Lloyd and his family all the very best for the future.

---

Country Arts SA is generally considered as the national leader in the delivery of and promotion of arts programs and activities for regional communities and I look forward to working with my fellow Trustees and Country Arts SA staff, over the next twelve months in building on the success of the organisation.

A handwritten signature in black ink, appearing to read 'Lew Owens', written in a cursive style.

Lew Owens  
Chair

## **Chief Executive Officer's Report**

---

Over the 2009-10 year Country Arts SA continued to build on its existing arts programs and importantly provide a number of new opportunities for regional communities to access and participate in the arts.

Over the 2009-10 year, with the support of the Regional Arts Fund, Country Arts SA was able to build on its very successful Riverland based dance initiative – Dance 'n' Action and extend this new program into the Far West of South Australia. During the year a number of new Skills Development activities were established.

It was also very pleasing to see the Australian Government's Regional Arts Fund assist regional communities which, in many instances, have no other opportunities to access funding for professional arts activities.

In particular, over the two years up to 30<sup>th</sup> June 2010, 23% of all grants paid were directed at projects which supported children and young people and 17% of all projects supported Indigenous development opportunities. Importantly, 53% of all grants paid supported communities living in outer regional, remote or very remote locations.

In March 2010 Country Arts SA celebrated the 25<sup>th</sup> Birthday of the Middleback Theatre in Whyalla. To mark this occasion Country Arts SA, in partnership with Southern Cross Television produced a celebratory DVD which provided highlights of the Centre's activities over its 25 years of operation.

Country Arts SA was also extremely pleased to continue its highly successful staffing partnerships with the Port Augusta City Council and Country Health SA - Mental Health Services.

Country Arts SA also established a new staffing partnership with the District Councils of Ceduna and Streaky Bay which has enabled the employment of a professional Arts Officer to service the Far West of South Australia.

In April 2010 Country Arts SA, through its Local Stages program, and with the support of the Australia Council, commenced a digital arts project which will see three technologists build Country Arts SA's capacity to develop a collaborative on line template for the evolution of new work and build the organisation's capacity to house and deliver new on line content.

In June 2010 Country Arts SA was pleased to receive a significant grant through the Indigenous Cultural Corporation (a Division of the Department of Environment, Water, Heritage and the Arts) which will enable Country Arts SA to establish a new statewide position of Indigenous Arts and Cultural Development Officer in August 2010.

The 2010 calendar year also saw the commencement of the Murray Bridge Regional Centre of Culture Program – Ripples. This initiative will represent the largest undertaking ever managed by Country Arts SA.

In June 2010 the Hon. John Hill, Minister Assisting the Premier in the Arts officially opened a new Council owned and operated performing and visual arts facility in Murray Bridge which included the redevelopment of the Murray Bridge Town Hall into a high quality and flexible 330 seat performing arts space and the further development of the already high quality Murray Bridge Regional Gallery at a total cost of just over \$4 million. This new facility represents the largest development of its kind in regional South Australia in over 20 years.

Commencing in January 2010 Country Arts SA delivered the first 6 months of the 2010 Regional Centre of Culture Program in Murray Bridge and saw over 21,000 people involved in skills development workshops, performances and exhibitions.

The highlight of the first half of the 2010 program was the presentation of the Adelaide Symphony Orchestra on the Murray Bridge Golf Course. This wonderful evening of fine music attracted an audience of over 5,500 people and also saw the culmination of Craig Walsh's two month residency in Murray Bridge with his stunning "Humanature" illumination project.

Across Country Arts SA other key outcomes included

### **Performing Arts Centres**

Over the 2009-10 year Country Arts SA presented 412 live performances and 1,367 film screenings across its performing arts centres situated in Whyalla, Port Pirie, Renmark, Noarlunga and Mount Gambier. This represents the maintenance of its performance numbers as compared to previous year. Of the live performances, Country Arts SA entrepreneured approximately 15% (or 60 performances) during the year.

It was also extremely pleasing to significantly increase hirings from commercial promoters by over 100% on the previous year (up from 45 hirings in 2008-09 to 92 hirings in 2009-10) and to maintain hirings from local arts organisations and community groups.

Overall, Country Arts SA sold over 174,000 tickets for live performances and films at its five regionally based performing arts centres.

The 2009-10 year represented Country Arts SA's second full year of managing the Hopgood Theatre (formerly the Noarlunga TAFE theatre). Country Arts SA was very pleased to be able to attract 19 commercial promoters to present performances in the theatre and to build on the already high level of usage of the theatre by the local community.

Overall, the Hopgood Theatre achieved 152 performance days and attracted total audiences of almost 39,000 people. Country Arts SA looks forward to continuing to build both the hiring and audience base at the Hopgood Theatre.

Over the 2009/2010 year Country Arts SA received funding totalling approximately \$650,000 from the South Australian Government to undertake urgent maintenance and remedial projects at its performing arts centres, including a major refurbishment of the Middleback Theatre auditorium and foyer space.

### **Performing Arts Touring**

Over the 2009-10 year Country Arts SA presented an annual touring program in its five performing arts centres situated in Renmark, Mount Gambier, Port Pirie, Noarlunga and Whyalla as well as the community owned venues in Tanunda and Port Lincoln.

Also in 2009-10 Country Arts SA continued to present its Morning Melodies and School Holiday Programs across its performing arts centres.

Country Arts SA also continued its valuable role as a member of the National Regional Arts Touring Coordinators Forum and during the year coordinated a 16 week multi-state tour of Patch Theatre Company's production of *The Fastest Boy in the World*.

Once again Country Arts SA's overall performing arts touring programs were very comprehensive with the organisation presenting 97 performances of 15 tours at 17 different venues across regional South Australia. In addition, as part of its annual touring program Country Arts SA presented a number of free workshops and toured the work of four South Australian based performing arts organisations.

Overall, Country Arts SA achieved a total audience of over 18,000 people.

### **Visual Arts Touring**

Over the 2009-10 year Country Arts SA toured 12 exhibitions across the State including one new exhibition. The new exhibition introduced for touring during the year entitled *Maralinga: The Anangu Story* displays the work of Indigenous artists from the Yalata and Oak Valley communities.

Once again Country Arts SA's Visual Arts Touring Exhibition program proved to be very popular with almost 85,000 people visiting a touring exhibition during the year.

Country Arts SA's Port Adelaide based New Land Gallery and Foyer exhibition space also continued to support the work of regionally based artists through the display of 14 exhibitions featuring the work of 55 artists during the year.

### **Arts Development Programs**

Over the 2009-10 year Country Arts SA approved 120 grants totalling \$459,036 to regionally based community groups and regionally based artists for arts and community cultural development projects.

Country Arts SA would very much like to acknowledge the role of the Australian Government in supporting regional arts development in South Australia through the Regional Arts Fund.

During the year Country Arts SA once again supported the 2009 South Australian Living Artists (SALA) Festival.

Also Country Arts SA created and produced works through its very successful Local Stages Program, including the following:

- dance and theatre work "A Country Dance" which was devised by Choreographer Gavin Clarke and Visual Artist Joshua Fartch. This work toured to 8 communities across regional South Australia; and
- a music performance "Nosferatu" created by Matthew Timmis, which saw 15 members from the Desert Voices Choir and 15 musicians perform Matthew's original sound track to the 1922 classic horror film "Nosferatu" as part of the 2010 Desert Fringe Festival in Port Augusta

### **Financial Performance**

Over the 2009-10 financial year Country Arts SA achieved a small cash surplus. After allowing for grants held in advance, Country Arts SA achieved a positive working capital of, in excess of \$300,000 as at 30<sup>th</sup> June 2010. This represents an outstanding financial result for Country Arts SA given the difficult economic circumstances confronting much of regional South Australia.

During the year Country Arts SA was pleased to secure a new corporate partnership with ElectraNet which is supporting the 2010 Regional Centre of Culture Program in Murray Bridge.

I would also like to thank our continuing principal sponsor ETSA Utilities, and other sponsors Portside Mitsubishi, International Arts Services and Regional Express Airlines for their support of Country Arts SA's arts programs.

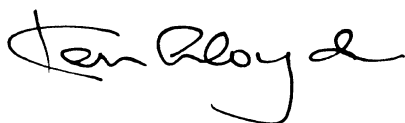
This report represents my final report as Chief Executive Officer of Country Arts SA as I will be retiring on 27<sup>th</sup> August 2010.

It has been a privilege and a pleasure to have been given the opportunity to work in the role of Chief Executive Officer of Country Arts SA over the past 17 years. However, after almost 42 years working in the South Australian Public Sector and almost 30 years of involvement as part of the South Australian Arts Industry, I am very much looking forward to spending more time with my wife Julie and my family.

I would like to place on record my thanks to everyone who has been associated with Country Arts SA, for your continued support over many years.

Finally, I would like to extend a sincere thank you to Country Arts SA's Board of Trustees, both past and present, Country Arts SA staff and the hundreds of volunteers who assist in the delivery of Country Arts SA's regionally based programs across the State. Without their support Country Arts SA's continuing high level of arts activity over the 2009-10 year would have not been possible.

I would like to wish Country Arts SA all the very best in its future endeavours.

A handwritten signature in black ink, appearing to read 'Ken Lloyd', with a stylized flourish at the end.

Ken Lloyd AM  
Chief Executive Officer

## Goal 1

---

### **Deliver a diverse program of professional arts to a broad range of regional and remote audiences**

Country Arts SA aims to deliver a diverse program of professional arts to a broad range of regional and remote audiences through:

- Invigorating, growing and maintaining arts volunteer networks
- Delivering and supporting a diverse range of high quality professional arts product
- Delivering professional arts development at the local level through engagement of specialists for a variety of art forms
- Developing and implementing new initiatives to develop and nurture audiences
- Building and maintaining successful relationships and partnerships
- Continuing to build relationships and partnerships with local government
- Reviewing all programs and delivery mechanisms to ensure their continued relevance.

In 2009-10 Country Arts SA delivered programs across the spectrum of artforms in regional South Australia, some of the highlights of the year are as follows:

#### **REGIONAL CENTRE OF CULTURE PROGRAM**

Country Arts SA has managed the Regional Centre of Culture program on behalf of the State Government of South Australia since 2007.

Through this initiative, a first for regional Australia, Country Arts SA encourages new investments in regional cultural infrastructure, new roles and methods for arts practices and provides increased access to the arts for the host Regional Centre of Culture community through the development and implementation of a year long cultural program.

In recognition of the success of the program the 2008 Regional Centre of Culture, Port Augusta Re-Imagines! was awarded both a Ruby Award and an AbAf Award.

The Ruby Awards celebrate creative excellence, community involvement, achievement and innovation. Country Arts SA's management of the Port Augusta Re-Imagines! program was recognised in the 'Community Impact over \$100,000' category which celebrates an artistic or cultural project or event that has had a significant positive impact on a community or region.

In addition, Country Arts SA together with Babcock and Brown Power (Principal Corporate Partner – Port Augusta Re-Imagines!) was awarded the 2009 QantasLink Regional Award as part of the Australian Business Arts Foundation awards.

The AbaF Awards celebrate the best strategic and creative connections between the private sector and the arts – in partnering, volunteering and giving.

The period from July 2009 to June 2010 saw the completion of a documentary website for Port Augusta Re-Imagines (the 2008 host community), at [www.re-imagines.com.au](http://www.re-imagines.com.au), the second phase of development of a new program for Murray Bridge, the development of a planning, research and evaluation framework and implementation of the first half of the year long program from February 2010. It also saw the announcement that the third Regional Centre of Culture will be hosted by the City of Alexandrina and the community of Goolwa in 2012.

The overarching concept that is beginning to emerge in the development of an RCC 'model', is exploring the stimulus effect that a concentration of arts activity into a major regional centre provides and how this helps to build strong and resourceful communities rich in community life as well as fostering community well-being across all sectors.

Host communities are encouraged to put forward new ideas, to embrace new ways of doing business with non-arts partners, to clear a path through uncharted territory, and to think about ways to bring their communities together in a spirit of cooperation and mutual benefit.

In Murray Bridge, community consultation and lively discussion resulted in the name *Ripples*, for the 2010 program, in recognition of both the significant part the Murray River plays in that community and the ripple effect that is created when a large amount of arts activity occurs in one place.

The development of the program for the first Regional Centre of Culture in Port Augusta was largely a chance to experiment. In the development of the program for Murray Bridge Country Arts SA was able to draw on that experience and could draw on the many successful elements at the same time as learning many lessons about what might be done better.

In early 2009, an extensive community consultation process began and a Reference Group and Aboriginal Steering Group (Kungan Ngarrindjeri Yunnan – which means Listen Ngarrindjeri Speak) were formed.

Several programming and operational strands were formally identified:

- Venue infrastructure and operational skills development
- Outside programming
- Local artist development
- Local programming
- Community cultural development

Country Arts SA established an integrated planning, programming and evaluation framework which started with establishing the set of goals and objectives against which each project and event could be evaluated throughout the year.

By measuring each Regional Centre of Culture against the same criteria, a picture will begin to build about the capacity of a Regional Centre of Culture concept to bring about social change in a community and how this has played out across regional South Australia.

The lead time for the program, increased from 12 months in Port Augusta to 18 months in Murray Bridge, enabled a process of extensive community consultation and the development of some excellent community art projects which reflect the particular needs, dreams, talents and desires of the community of Murray Bridge.

A set of goals which guided the development of the program and were endorsed by the community reference groups of Murray Bridge, covered three main areas:

- the development of arts and cultural experiences and opportunities
- contribution towards building a strong, inclusive and diverse community, and
- contribution towards social health and wellbeing of individuals who live and work in the region

The evaluation plan for Murray Bridge promises to provide some rich data about the impact of the year which has had a program of skills development at its core. It comprises:

- a community survey before and after Ripples 2010 with samples of 400 residents to gauge responses to the program;

- feedback from participants in most of the projects and events
- feedback from community groups involved, and
- a number of more in depth case studies of particular projects that show in detail how these experience affect peoples' lives.

The case studies are revealing some remarkable development for particular communities. Just one example is the *Ngarrindjeri Mimir Kykulan (Ngarrindjeri Women Singing)* who have been involved in weekly skills exchanges which have enhanced the women's confidence and abilities to perform in public whilst at the same time working with Rita Lindsay Junior to create a Welcome to Country song in Ngarrindjeri language (which was performed for the first time at the Gala Opening of the Murray Bridge Town Hall).

State funded companies involved in the overall Ripples 2010 program include Adelaide Festival of Arts, Adelaide Fringe, Adelaide Symphony Orchestra, ArtLab, Ausmusic, Australian Dance Theatre, Border Project, Carclew Youth Arts, Carrick Hill, Cirkidz, Community Arts Network, Friendly Street Poets, JamFactory, History SA, Kurruru, Media Resource Centre, Palmer Biennial, Patch Theatre Company, Regional Galleries Association, Restless, SA Film Corporation, SALA Festival, SA Museum, State Theatre Company, State Library of SA, Tandanya, Vitalstatistix and Windmill Performing Arts.

This represents only a portion of the arts companies and individuals involved. Many individual artists, both local and interstate, have contributed to the program in addition to interstate companies, bands and ensembles.

With 5 months still to run, in a centre of around 18,000 people, attendances already total 21,143.

A hallmark of the Murray Bridge program is the skills exchange program which has seen 1,603 people involved in 46 hands on opportunities. A number of these involve opportunities for weekly or extended involvement.

9479 people have witnessed 14 outdoor visual arts events and 17 indoor exhibitions and associated functions, not including the 5,500 people who saw Craig Walsh's stunning *Humanature* at the ASO's outdoor performance through his national residency project.

9440 people have already seen 20 performances of 13 different performance based events and schools participation totals 1194 students so far.

### **Cultural Infrastructure**

In addition to \$750,000 for the cultural program, the State Government also made provision for \$750,000 for capital infrastructure. The Rural City of Murray Bridge had already embarked on a \$5 million dollar upgrade to the Town Hall precinct and the additional funds made completion possible in time for the gala opening during Ripples 2010. The Murray Bridge Town Hall is now a well-resourced 300 seat theatre and the Murray Bridge Regional Gallery complex remodelled with added workshop spaces and improvements to the retail space.

Country Arts SA has also taken a leading role in advising Council on venue management and has been contracted by Council to manage the opening phase of the new facility and to develop a set of operational procedures and policies.

## PERFORMING ARTS TOURING PROGRAM

During the 2009-10 financial year, Country Arts SA's performing arts touring programs achieved the following:

Total number of shows presented covering all events and tours

- Generated 15 tours and events
- presented 97 performances
- visited 17 different venues
- performed to a total audience of 18,346 people
- achieved an average per performance attendance of 189
- presented a number of free workshops, forums and performances
- toured 5 South Australian arts companies

Full statistics are included at Appendix A.

In 2009-10 the touring programs encompassed opera, theatre (Shakespeare, comedy, political satire and new plays) contemporary dance, chamber music, jazz, comedy and children's theatre.

South Australian companies and productions presented in the program were *A Country Dance* by Gavin Clarke and Josh Fartch, *Carmen* by CoOpera, *Marmalade Fiesta*, and *La Boheme* by CoOpera.

Interstate companies and productions taking part in 2009-10 included *Guitar Heaven, Letter's End* by Spoon Tree Productions, *Baby Boomer Blues* by Perth Theatre Company, *Taming of the Shrew* by Bell Shakespeare, *Nightcafe* by DanceNorth, *Godzone* by Melbourne Theatre Company, *Shorter + Sweeter* by Short + Sweet, *The Age I'm In* by Force Majeure, *Needle and The Damage Done* by Fiona Scott-Norman and Melbourne Comedy Festival Roadshow.

### Mainstage Season performances

- performed to a total audience of 10,661
- achieved an average per performance attendance of 205

The Mainstage Seasons are arranged and marketed in calendar years and the shows included in this 2009-10 reporting period are:

#### Season 2009, July to December

- Letter's End - Spoon Tree Productions
- Baby Boomer Blues - Perth Theatre Company
- Taming of the Shrew - Bell Shakespeare Company
- Nightcafe - Dancenorth

#### Season 2010, January to June

- Godzone - Melbourne Theatre Company
- La Boheme, Puccini - Co-Opera
- Shorter +Sweeter - Short+Sweet
- The Age I'm In - Force Majeure (Road Work Program)
- Melbourne Comedy Festival Roadshow

A major and necessary component of national touring is funding from Playing Australia, an Australian Government initiative. Playing Australia funds travel, freight and accommodation costs for many national tours to South Australia, which during 2009-10 included *Letter's End* by Spoon Tree Productions, *Baby Boomer Blues* by Perth Theatre Company, *Taming of the*

*Shrew* by Bell Shakespeare, *Nightcafe* by DanceNorth, *Godzone* by Melbourne Theatre Company, *Shorter + Sweeter* by Short + Sweet, *The Age I'm In* by Force Majeure and *La Boheme* by CoOpera.

*The Age I'm In* by Force Majeure was the first work in Road Work, a touring program funded by the Australia Council. Country Arts SA has committed to being a part of this program until 2012, which aims to bring adventurous dance and theatre to regional audiences.

Workshops and other associated activities were given as part of the Mainstage Season program in five of the ten tours, including: *Letter's End*, *Taming of the Shrew*, *La Boheme* by CoOpera, *Shorter+Sweeter*, and *The Age I'm In*.

### **Schools Program**

In 2010 for the first time, daytime performances aimed at schools audiences were promoted to schools in each region. The program in 2010 includes *Sharon Keep Your Hair On* by Patch Theatre Company, *The 7 Stages of Grieving* by State Theatre Company of South Australia, Circus Oz and free Film Screenings.

### **National Touring**

Country Arts SA plays an important role in the co-ordination of national tours, which provides access for regional audiences to the highest quality performances throughout Australia, which would not otherwise be possible.

In 2009-10 Country Arts SA coordinated the national tour of *The Fastest Boy in the World* by Patch Theatre Company, which was nominated for four APACA Drovers Awards, and awarded the inaugural 'Tour of the Year'. At the same time, preparations were underway for Patch Theatre Company's 2010 tour of *Special Delivery* and Country Arts SA was also successfully funded to coordinate the 2011 tour of *The Happiest Show on Earth*.

A member of Regional Arts Australia, Country Arts SA is one of six organisations of the Blue Heeler National Touring Network and participates in the Cyberpaddock touring product selection process and Long Paddock Forum.

The Performing Arts Touring Unit presented the April 2010 Long Paddock Forum at The Riverside Theatre, Parramatta, NSW.

Over 128 representatives from more than 100 performing arts centres, together with 53 producers and 4 staff and 2 committee members from Playing Australia attended. Comments from all stakeholders were consistent in their praise of the smooth running and easy manner of its delivery.

23 productions were presented by producers from all over Australia, in a variety of genres including new Australian plays, physical theatre, classical dramatic works, children's theatre, comedy, circus and music theatre. The State Theatre Company of SA and Windmill Theatre both pitched productions which were well received by presenters from around the country. Applications for funding to support a tour in 2011 were being developed by both these South Australian performing arts companies, which is a direct result from taking part in this Long Paddock Forum.

The networking function had a completely South Australian flavour, with a showcase performance by South Australian percussionist, Nick Parnell.

This was followed with the second National Tour Coordinators Meeting, involving the Blue Heelers from Country Arts SA, Country Arts WA, Regional Arts Victoria, Queensland Arts Council, ArtbackNT and Tasmania Performs and tour coordinators from Arts on Tour NSW,

Critical Stages, Performing Lines and Kultour at the offices of the Australia Council. Members of Playing Australia also attended.

### **Shows on the Road**

The Shows on the Road program offers a selection of Country Arts SA sponsored touring shows, as well as guarantee against loss support for volunteer presenter groups wishing to present professional performing arts in their towns.

Groups are able to take advantage of tours arranged and sponsored by Country Arts SA, or can source single performances from elsewhere without the direct involvement of the performing arts touring unit.

Building the strength, marketing reach and audience development of the participating presenter groups in this program has again been a focus this year.

In 2009-10 four companies presented 24 performances in 12 regional towns to a total audience of 1282.

As part of the 2010 Fringe Festival, Country Arts SA toured *Needle and The Damage Done* by Fiona Scott-Norman to audiences in Naracoorte, Lameroo, Balaklava, Kadina, Port Augusta and Ceduna.

*A Country Dance* was a new dance work developed as part of Local Stages, managed by Country Arts SA. *A Country Dance* was presented in Mount Gambier, Bordertown, Lameroo, Renmark, Port Adelaide, Wallaroo, Port Augusta and Ceduna. This is the first time that a Country Arts SA performance has been developed and toured in regional South Australia. The nature of the work gave participating presenter groups an opportunity to identify and target new markets in their regions, thereby growing their audiences.

### **GAL (Guarantee Against Loss)**

During the 2009-10 financial year, 6 presenter groups were successfully funded to present 8 performances via a guarantee against loss.

#### **Performer**

Graham Hugo - Country Singer Silly Billies  
Piano Clarinet Duo  
24 Carat Bombshells

Piano Violin Duo  
Hot Spell  
Almost Anything Goes

Desperadoes  
Amity Dry 'Mother Wife and the Complicated Life'

#### **Presenter Group**

Lameroo Memorial Hall  
Port Lincoln Arts Council Inc  
Port Lincoln Civic Hall Management Board Inc  
Port Lincoln Arts Council Inc  
Bordertown Arts Council Inc.  
Port Lincoln Civic Hall Management Board Inc  
Cleve Arts Council Incorporated  
PEAK (Promoters of Entertainment & Arts in Keith)

Successful new Presenter Group applications were received from communities in Tanunda, Raukkan, Murray Bridge and Balaklava.

## VISUAL ARTS TOURING PROGRAM

Country Arts SA's Visual Arts Touring program is jointly funded by the Visual Arts and Craft Strategy, an initiative of the Australian, State and Territory Governments and the Visual Arts and Craft Board of the Australia Council for the Arts. The Visual Arts and Craft Board supports the creation, presentation and interpretation of contemporary Australian visual arts and craft.

Country Arts SA is the South Australian representative organisation of National Exhibition Touring Support Australia (NETS). NETS is a national network of visual arts touring agencies represented in all states and territories (except the ACT) and is committed to promoting and presenting contemporary visual art practice.

In 2009-10, 1 new exhibition *Maralinga: The Anangu Story* was offered to 21 regional galleries and exhibition spaces across South Australia.

*Maralinga: The Anangu Story* tells the story of the Maralinga atomic tests on the aboriginal communities that called these lands their home. With this touring exhibition the artwork presented was produced by the Yalata and Oak Valley communities for a picture book of the same name, working with author Christobel Mattingley published in 2009 by Allen and Unwin.

Exhibitions which continued touring in the 2009-10 financial year, included:

- Parallel
- Ripples in the Sand
- the sea
- Le Chéile
- Our Mob 08 on Tour
- Hinterland
- Design Now
- ...In The Top Paddock
- My Scarum
- Kym Needle
- Portable Worlds 2<sup>nd</sup> Edition

Country Arts SA's Visual Arts Touring Program have continued or established the following partnerships with the following organisations to assist in the delivery of the highest quality visual arts to regional South Australia:

- Allen & Unwin
- Maralinga Tjarutja Inc.
- Contemporary Art Services Tasmania (CAST) Touring
- Port Augusta City Council
- Flinders University Art Museum
- Regional Galleries Association of South Australia (RGASA)
- ANAT-Australian Network of Art & Technology
- Adelaide Festival Centre & SICAD
- Craftsouth: Centre for Contemporary Craft & Design Inc.
- JamFactory Contemporary Craft & Design
- National Exhibitions Touring Support Australia (NETS)
- Museums & Galleries NSW
- Museums & Galleries Services Queensland
- NETS Victoria

- Palmer Sculpture Biennial
- International Art Services
- Moving Art SA

## NEW LAND GALLERY

Six exhibitions were displayed in the New Land Gallery in 2009-10. Professional development opportunities for regional artists exhibiting in these spaces are aimed at encouraging artists to undertake the more challenging option of exhibition touring.

The New Land Gallery predominately displays the work of regionally based South Australian artists. In addition to the New Land Gallery Country Arts SA offers regionally based South Australian artists with the opportunity to display work in the foyer space of its Port Adelaide offices. The New Land Gallery Foyer Space program provides opportunities for emerging artists to display work as part of the overall New Land Gallery program.

### **New Land Gallery exhibitions for 2009-10:**

- Germein Art Focus - Through A Northern Lens
- Parallel
- Cindy Durant – Allure
- Le Chèile
- Ripples in the Sand
- Roxanne Prime - While

### **New Land Gallery Foyer Space exhibitions for 2009-10:**

- Kerry Youde - Pixels and Propane
- Craig Ellis
- Detlef Baumer - Starting From Scratch
- Simon Smith

Full visual arts exhibition lists and statistics are included at Appendix B.

## STATE FORUM

### **Creative Stimulus – the role of the arts in an economic downturn**

Country Arts SA's biennial statewide forum was held in November 2009 in the lead up to *Ripples Murray Bridge*. *Creative Stimulus – the role of the arts in an economic downturn* brought to Murray Bridge a mix of producers, practitioners, volunteers and presenters to interact with each other and the arts community of the region.

120 delegates and speakers from interstate and South Australia met to discuss, debate and explore what regional and remote communities need in order to exercise their cultural and artistic visions.

Delegates enjoyed workshops in animation and dance, were challenged by ways to develop a statewide project, and learnt how to attract new business partners to their project.

Keynote speaker Richard Harris, CEO of the South Australian Film Corporation set the scene with his discussion of how the film industry is doing their business differently to meet these challenging times, and MC Kev Kropinyeri kept delegates laughing when things threatened to get serious!

---

Additionally, delegates at the forum were the first to hear about the highlights of the 2010 Regional Centre of Culture – Ripples Murray Bridge.

A number of delegates also joined members of the Murray Bridge community to watch a fabulous performance of Carmen by SA's own Co-Opera.

## Goal 2

---

### Encourage and foster cultural and artistic growth in regional and remote communities

Country Arts SA aims to encourage and foster cultural and artistic growth in regional and remote communities through:

- Promoting best practice regional projects to arts funding bodies, the arts industry, government, business and the wider community
- Identify and promote the needs of communities and artists to arts funding bodies, the arts industry, government, business and the wider community
- Maintaining representation on national and state arts organisations
- Facilitating high quality information flow to regional communities and artists regarding funding programs and opportunities
- Identifying and delivering long-term strategic partnerships to increase arts and cultural opportunities for regional communities
- Invigorating, growing and maintaining arts volunteer networks
- Increasing opportunities for individual artists to engage with professional arts practitioners
- Continuing to build relationships and partnerships with local government
- Identifying and promoting the needs of Indigenous and multicultural communities
- Undertaking research and evaluation of all programs and delivery mechanisms to:
  - Ensure their continued relevance
  - Identify 'gaps' in service and practice
  - Ensure Country Arts SA meets or exceeds state government priorities

In 2009-10 Country Arts SA undertook the following:

#### **SUSTAINABLE COMMUNITY CULTURAL DEVELOPMENT**

Country Arts SA offers a comprehensive grant program through funding allocations provided through both the South Australian and Australian Governments. Coupled with the information and advice service provided by Country Arts SA's network of regional arts officers, the grant program supports arts and cultural development projects to attain sustainable benefits for regionally based artists and artswokers within their communities.

Grants provide unique opportunities to employ professional artists and artswokers who collaborate with communities in developing quality outcomes, and community skills, while creating new, original and innovative work. Through Country Arts SA grants programs, regional South Australians strongly contribute to a diverse and vibrant culture of creativity within the state.

In 2009-10 Country Arts SA approved 120 grants totalling \$459,036 to regionally based community groups and regionally based artists for arts and community cultural development projects.

#### **Regional Arts Fund Programs**

The Regional Arts Fund is an Australian Government initiative supporting the arts in regional and remote Australia administered in South Australia by Country Arts SA.

Assistance is available across all art forms for projects that support the development of creative and innovative regional, remote and very remote communities in which participation in and access to cultural activities contributes to sustainable cultural, social and economic capacity and wellbeing.

The objectives of the Regional Arts Fund are to:

- Encourage and support sustainable cultural development in regional communities where possible, rather than 'one-off' events
- Assist sustainable economic and social development within regional, remote and very remote communities, including a focus on Indigenous and isolated communities
- Develop partnerships with local government, community groups, the private sector, state government agencies and other relevant groups which leverage financial and/or in-kind support for specific projects and encourage ongoing collaboration or support for cultural activities following the funded projects
- Assist the development of cultural networks, especially in isolated areas, to facilitate information exchange and co-operative relationships
- Increase employment and professional development opportunities for and raise the profile of regional and remote artists; and
- Increase skills development initiatives (including mentoring schemes), both for individuals and organisations in regional and remote communities. Initiatives may relate to a specific form of art or craft practice, or broader community cultural development and capacity building.

Country Arts SA provides the following funding programs to support these objectives:

- New Communities Program
- Community Projects Program
- Opportunities for Regional Artists Program
  - Category 1: Professional Development
  - Category 2: Artist Led Initiatives
- Regional Arts Partnerships Program
- Regional Arts Fund Quick Response Grants.

The 2009-10 year is a part of a 3-year funding arrangement (2009-2012) with the Australian Government to deliver the Regional Arts Fund.

#### *New Communities Program*

Grants are available to assist regional, remote or very remote communities or groups who have never applied to Country Arts SA or never undertaken an arts project. Applications from groups who are disadvantaged and unlikely to apply for support are also encouraged.

An example of a New Communities Program funded in 2009-10.

Andamooka Bohemian Cabaret- The Bohemian Cabaret matches local musicians with visiting professional musicians to produce a concert of Australian music as part of the Andamooka Opal Festival.

#### *Community Projects Program*

Grants are available to assist groups to undertake projects, in any art form, which extend or advance knowledge, understanding, participation or development of the arts and culture within communities.

An example of a Community Projects Program funded in 2009-10 is:

Farm Gate Festival – Alexandrina Council: The inaugural Farm Gate project was promoted as a bi-annual festival across the Alexandrina Council region. The event brought together

the farming community and local professional artists. The idea encouraged land owners, farming, small rural businesses and associations to collaborate on a creative project. The project was an exciting opportunity to work together on a creative process and to express ideas and issues about the land, water, biodiversity and community life.

#### *Opportunities for Regional Artists Program – Category 1 Professional Development*

Grants are available for proposals that develop an artist's understanding of a specific form of art or craft practice or community cultural development practice and capacity building.

An example of an Opportunities for Regional Artists Program – Category 1 Professional Development proposal funded in 2009-10 is:

Dance Mentorship: Young Riverland performer Kelly Wegener was mentored by three dance practitioners – Peta Johnson, Katrina Lazaroff, and Jade Earlandsen. The dance practitioners individually offered Kelly guidance and support to develop a high quality dance work for young regional dancers for Play Fest 2010.

#### *Opportunities for Regional Artists Program – Category 2 Artist Led Initiatives*

Grants are available for proposals from professional regional artists with projects that will have significant cultural and community benefit to regional South Australia.

An example of an Opportunities for Regional Artists Program – Category 2 Artist Led Initiatives program during 2009-10 is:

Interactive Textiles Workshops - Artist Cindi Drennan worked with textile artists from three regions, including Flinders Ranges, Mount Gambier and Murray Bridge to explore new technologies and the opportunity to create 'Interactive Textiles', expanding traditional textile practice and exploring digital mediums through interactive technology.

#### *Regional Arts Partnerships Program*

Grants are available for arts organisations to develop sustainable projects in partnership with other sectors eg industry, local government, multicultural, Indigenous, environment, health, employment, aged or youth sectors, regional or community development organisations. These projects should aim to significantly increase local resources and sustainable support for the arts and cultural development in communities. Grants are also available for arts projects involving multiple art forms, new technologies, new models for participation or a number of different communities (geographically or culturally).

An example of a Regional Arts Partnerships program funded in 2009-10 is:

Desert Oak Project: The Oak Valley community engaged two professional artists to run professional development opportunities through visual arts workshops over a period of months. The workshops gradually developed new skills and techniques while assisting with a public outcome for an exhibition and cultural event, involving visual arts, dance and story telling.

#### *Regional Arts Fund Quick Response Grants*

In exceptional circumstances, applications seeking minor funding support up to \$1,500 may be considered under quick response arrangements. The project will only be considered under these arrangements if the applicant would otherwise be disadvantaged by being

ineligible for other forms of financial assistance or if there is a genuine reason why the application could not have been submitted by the appropriate closing date.

An example of a Regional Arts Fund Quick Response Grant in 2009-10 is:

Sydney PD Residency: Macclesfield artist Tis Milner Nichols was supported for a professional development opportunity over five weeks in Sydney. Ms Nichols was offered a placement opportunity in Sydney's inner west on various artistic projects. The professional development residency involved the culturally and linguistically diverse local communities of Sydney's inner west.

A complete listing of projects funded is included at appendix D.

### **Arts Development Programs**

Through the support of Arts SA, Country Arts SA are able to offer grants that assist groups and individuals to undertake projects that develop skills, understanding and culture within communities. Generally applications for assistance with travel, accommodation and living allowance may be supported.

The objectives of Country Arts SA's Arts Development Programs are to:

- Assist art form or cultural development skills of communities or individuals
- Enhance opportunities for communities to choose and manage their own creative cultural development activities
- Provide opportunities to develop arts practice within communities and by individuals
- Increase access to, participation in and appreciation of the arts by communities and individuals
- Demonstrate the value of the arts and community culture
- Raise awareness of the value of the arts in communities

Country Arts SA provides the following funding programs to support these objectives:

- Skills Development
- Shows on the Road Program

#### *Skills Development*

Grants are available to assist groups and individuals to develop art form or cultural development skills through workshops.

An example of a Skills Development Grant in 2009-10 is:

Printmaking Workshop: The Mpulaarra Aboriginal Arts group from Port Pirie advanced their visual art practice by learning the technique of printmaking. Project artist Tina Moore conducted a skills development workshop which assisted artists to learn new techniques and create printed works using, lion cut and other printmaking styles.

#### *Shows on the Road*

This program aims to increase access to the arts through the delivery of professional performing arts to smaller country centres. Country Arts SA provides some guarantee against loss assistance to registered presenter groups who are committed to presenting performances in their community.

An example of a Shows on the Road Grant in 2009-10 is:

Promoters of Entertainment and Arts in Keith PEAK presented – Amity Dry ‘Mother, Wife, and the Complicated Life’ in October 2009. The production was a humorous look at modern day family life.

In addition to those listed above, Country Arts SA staff continue to support projects which aim to contribute to much broader community outcomes including improved well-being and expanded opportunity, as well as sustainable community cultural development. Examples of these are listed below:

#### *Ngarrindjeri Kykulan Miminar*

During the first few months of 2010 the Ngarrindjeri women’s choir were able to significantly develop their vocal and performing skills while creating new songs. The initial aim was to create a Welcome to Country song to be performed widely in official ceremonies and public events. The women aim to eventually record the song to contribute to the cultural history of the Ngarrindjeri people. Performed in Ngarrindjeri language and English, the song has been widely appreciated by regional communities in Ngarrindjeri country. The workshops also built vocal agility, confidence in performing for an audience, and established Ngarrindjeri choir leaders who could continue to develop the choir and their repertoire in the future. Professionals Vonda Last and Trace Cannini facilitated the workshops in the Kykulan Miminar project. Two of the project participants were mentored in conducting and accompanying the choir as well as teaching new songs. The choir developed six new songs for the choir’s repertoire. Through the project the Ngarrindjeri Kykulan Miminar have developed in confidence and are now widely sought after as regional performers.

#### *Get Down – Get Dance Out West*

The Get Down dance workshop program commenced in 2009-2010 financial year, and is a year long dance workshoping program in the mid and far west of South Australia. The program will be completed during the 2010 calendar year. Initial workshops in Wudinna, Streaky Bay and Ceduna were very popular and provided access for remote communities in dance practice development. Fourteen visiting dance practitioners facilitated the workshops in each of the three locations.

#### *Sedan Town Triangle Mosaic Community Art Work*

Young and older participants from Sedan came together to develop a small community arts project in the centre of the Sedan township. The town triangle is a focal point in the centre of Sedan where several roads cross. The project beautified an obelisk in the centre of the town triangle with mosaic panels which depict the regions farming and community life. Working with regional artist Michael Tye, community participants were involved in design workshops and mosaic techniques. Community members prepared the site and developed new artistic skills while confronting the challenges of working with ceramic tiles cut to form a mosaic artwork. The new mosaic artwork in the town triangle was officially opened as part of significant community celebrations in early 2010.

#### *Creative Daze – Community Skills Development*

A group of Clayton Bay and Milang artists working under the banner Creative Daze developed informal community workshops in Goolwa at the South Coast Regional Arts Centre during January 2010. The workshops focused on weaving, printing from natural objects, oil based marbling, and papermaking. Professional artist Jan Marinos, visited Goolwa to facilitate the workshops. Jan is from Burnie in Tasmania, Australia’s paper-making capital. Artists and general members of the Alexandrina Council region participated in the project. The workshops provided skills in paper making techniques such as beating and pulping, stripping and preparing natural fibres, and creating different types of papers

from translucent to highly textured finishes. Participants planned to use the created paper for the basis of other artworks and creative projects.

#### *Port Germein Youth Hip Hop Dance Project*

Port Germein youth hosted a Hip Hop dance project conducted by professional dance artist Jade Erlandsen. Young people were able to learn new dance steps and body moves while enjoying how to Hip Hop dance safely. The workshops encouraged individual self expression, developing a dance routine, and building confidence. The Hip Hop Dance project encouraged participants to be daring and to experiment. The participants also learnt to work closely as a team in creating formation dance routines. Following the workshops the young Hip Hop Dancers created a performance for their families and the wider community. Access to dance in the region was very limited and the contemporary interest in Hip Hop by young people meant strong participation in the workshops during school holidays.

### **COMMUNITY PARTNERSHIPS SUPPORT**

In February 2008 Country Arts SA entered into an agreement with the Australia Council for the Arts to deliver Community Partnerships Support Services for regional South Australia for a period of three years (2008 – 2010).

The Community Partnerships Project Officer is responsible for raising awareness and understanding of the opportunities available to individual artists and community organisations through the Community Partnerships section of the Australia Council.

Delivery of information in the first instance focused on providing Country Arts SA staff with detailed information about Community Partnerships Grants and Initiatives.

Through the dissemination of information and follow up advisory services, Country Arts SA provided direct support and assistance for a range of projects that support sustainable cultural development and cultural activities in regional South Australia including:

- Southern Youth Theatre Ensemble - Funding advice to deliver a series of workshops in performance techniques for young people across the Fleurieu Peninsula in 2011.
- Jessica Foster - Limestone Coast based artist seeking to undertake professional development in working with culturally and linguistically diverse communities exploring expression/conversations without words.
- Carmel Young - Requested information regarding bringing together three Indigenous Choirs - two from the remote APY Lands - with a performance outcome in Adelaide as part of the 2011 Fringe Festival.
- Youth versus Alcohol - Community group seeking to encourage non-arts partners to participate in a long term project aimed at addressing Youth and Alcohol violence within their community.

The Community Partnerships Officer continually encourages and supports projects and initiatives that build capacity across regional South Australia.

### **LEARNING CONNECTIONS**

Learning Connections is a flexible hands-on program developed by Country Arts SA to encourage meaningful and engaging encounters with art from the earliest years through adult life. It provides points of entry for community members of all ages to expand horizons and promote life-long participation in the arts.

Public programs, workshops, discovery trails and learning resources for teachers significantly enhance the experiences of those engaging with Country Arts SA's visual or performing arts programs.

In 2009-2010 Country Arts SA continued to roll-out the Learning Connections lifelong learning strategy in association with the Regional Galleries Association, through a series of workshops, plus distribution of existing learning materials for the continuing exhibition program.

Exhibitions with resources included *The Sea, Design Now, Hinterland, My Sacrum, Our Mob 08 Touring, Parallel, In the Top Paddock* and *Ripples in the Sand*.

Workshops and Floor Talks were conducted in Port Lincoln, Bordertown, Berri, Goolwa, Port Augusta, Hahndorf and Ceduna.

## LOCAL STAGES

In 2009-10 the Local Stages Program continued to develop a regional performance based culture as a part of an agreement between Country Arts SA, Arts SA and the Australia Council for the Arts.

Through a Creative Producer model, Local Stages is Country Arts SA's performance development arm and is realising a professional theatre and performance practice that spans from the Upper Spencer Gulf, to the South East regions of regional South Australia. The program networks and connects local and isolated artists in these regions to artists based in Adelaide and interstate to develop new and innovative works. In 2009 Local Stages also incorporated the Murray Bridge region in readiness for that district's 2010 Regional Centre of Culture program.

### *Varcoe Foundry Residency Program (Mount Gambier)*

By July 2009 The Varcoe Foundry Residency Program in Mount Gambier had given birth to the new work 'A Country Dance'. Choreographer Gavin Clarke and visual artist Joshua Fartch's dance theatre ode to growing up in a regional area was warmly received by audiences in the subsequent regional tour.

Told through the eyes of young adults who have lived and grown up in regional South Australia 'A Country Dance' is based on old time dances that are still practiced in social dance clubs that exist throughout the State. Gavin and Josh and their team of professional dancers allowed movements of beauty, humour and dynamic energy to explore the hardship, isolation, ruggedness, timelessness and tenderness that is country life. The work was specifically aimed at rural audiences and was specially designed to play in any of the 'country halls' that dot the regional landscape. It also provides an opportunity to expose new rural audiences to styles of dance and theatre seldom seen in regional areas.

'A Country Dance' was developed through the Varcoe Foundry Residency, jointly funded by Local Stages and the Dance Board of the Australia Council and toured through Country Arts SA's "Shows On The Road" Program.

Local Stages provided The Varcoe Foundry Space for Adelaide / Melbourne based ambient combo Panoptique Electrical for a one off performance as they made their way from Melbourne to Adelaide as a part of the national Sound Travellers scheme. Their live shows comprise of 30-60 minute sets based partly on structured compositions, improvisations and field recordings made site-specifically, and on the day, of the scheduled performance. This type of music and performance is not especially well known in regional parts of South Australia and a workshop option was provided as a strategy for audiences/makers to engage

with the free performance. It was a unique opportunity to be “drowned in beautiful sound” for those who attended the performance.

The first stage development of a new work ‘If There Was a Colour Darker than Black I’d Wear It’ (aka ‘Black’) occurred in October 2009. The project has emerged initially from project instigator, Director / Actor John Crouch’s fascination with the type of impressions that 3 very dominant ideologies have on young men before they enter adulthood in regional areas; Family, Sport and Media Exacerbated Consumer Markets (Subcultures).

Local Stages brought together 6 theatre makers with a connection to Mount Gambier to explore this fascination and to begin creating live images with people, objects and simple projections that explore these 3 ideologies. Stage 2 of the development will occur in October 2010.

### *Upper Spencer Gulf Activities*

The Port Festival in Port Adelaide provided two opportunities for Local Stages’ Port Augusta based artists Matthew Timmis and Cindi Drennan. Matthew’s amazing stereo panorama, ‘Car-Cophony’ was restaged on Dock 1 against a suitable industrial landscape and Cindi’s moving and charming new work ‘Hart’s Mill Inhabited’ was created as a part of her Artist in Residence for the Port Festival. Attracting many comparisons to Adelaide Festival’s Northern Lights the audience soon discovered that this work was animated and carried a narrative.

Matthew and Cindi continue to collaborate when they are both in Port Augusta. The 2010 Desert Fringe provided an opportunity for Matthew’s original soundtrack to the 1922 silent, black and white, horror classic ‘Nosferatu’ to be showcased. Comprising 15 members of the local Desert Voices Choir and 15 local musicians it was a sight to behold and thrilling to hear.

On the same night Cindi’s recent work with Whyalla based youth theatre company D-Faces, ‘Guerilla Tactics’ was featured as a roving performance in the Barracks. Both Cindi’s and Matthew’s unconventional approach to their work is perfectly suited to being presented at the annual Desert Fringe allowing a wonderful, occasional and unsuspecting dialogue between locally based professional artists and their ready and willing community around the presentation and performance of new and innovative performance and art.

### *Murray Bridge Activities*

The 2010 Murray Bridge Regional Centre of Culture program ‘Ripples Murray Bridge’ featured the Local Stages project ‘I’m Still Here Parts I-V’ in mid March 2010. This collaborative “lab style” project involved 3 outside artists, Julian Crotti, Amelia Walker and Emma Northey and one locally based artist Peter Smith. Over a five week period a working method of concurrent curiosity and courage from the artists succeeded in engaging the Murray Bridge population that was largely unfamiliar with performance and cross disciplinary arts. This very open and visible process driven work resulted in five pieces being displayed in the same shop front as it was being made. Video works that involved notions of performance along with interactive pieces that required a sense of play and discovery from the viewer / audience were included in this richly prismatic response to the town ship of Murray Bridge.

An autumn set of digital / DIY art workshops otherwise known collectively as ‘Dexter’ began in earnest in April 2010. From skate videos through to DJ workshops, video making workshops and flickr orientation classes, the workshops were successful at finding the extremely interested and capable in the region. The workshops were designed to allow only a few people exclusive access to the skills of the visiting workshop artists thus creating a

highly informed and intensive up-skilling experience for those that wanted it but also a relaxed play time atmosphere for those that were just interested in dabbling.

Country Arts SA was one of 9 organisations across the nation to be involved in the Australia Council's digital arts project 'Geek in Residence'. For twelve months the organisation will host three technologists under the Local Stages banner to;

- Develop Country Arts SA's capacity to house and deliver creative online content.
- Develop a collaborative on line template for the new work to evolve with regional artists,
- Develop innovative strategies for public interface and
- Develop a template for an audience experience that crosses online and live boundaries.

Country Arts SA's 'Geeks' or Digital Arts Officer's have commenced working with the Creative Producer, Local Stages to;

- Develop regional communities' understanding and navigation of on line content, forms and language.
- Collaborate with current staff of Country Arts SA to develop the organisation's on line capacity.
- Develop a collaborative on line template for regional artists to develop the work.
- Develop a relationship with ABC Open and the South Australian regional digital hubs.
- Work with Country Arts SA's regional theatres to house the live content.

This is an exciting and truly new frontier venture that will deliver unexpected results for the organisation and allow it to at look at new ways of delivering arts services, products and communicating with our communities.

## **DANCE N ACTION (D'n'A)**

In 2009-10 Dance 'n' Action (D'n'A) continued to successfully provide new dance opportunities within the Riverland, as well as expanding to the Far West of the state with the inclusion of a new program, Get Down (Get Dance Out West Now), in the communities of Ceduna, Streaky Bay and Wudinna.

The program, supported by the Regional Arts Fund, is designed to provide opportunities that develop regional dance artists' skills and encourage them to explore professional pathways. The program also assists in building networks with dance professionals, dance companies and dance service providers from across Australia to maintain and develop dance in regional South Australia.

During the reporting period, D'n'A worked with all of South Australia's professional dance companies - Australian Dance Theatre (Collidescope), Leigh Warren and Dancers (Collidescope), Restless Dance Theatre (Restless in the Riverland), Kurruru Youth Performing Arts (Blak Nite, SAIYWAT and Spirit Festival) and South Australia's leading tertiary dance training facility AC Arts ('So the Story Goes').

The initiative has delivered projects which have involved 22 individual independent professional dance practitioners, ranging from contemporary dance, hip hop, jazz, salsa, belly dance, Argentinean tango, early childhood dance and movement for actors. All of these artists as part of their brief have engaged with artists on the ground in the region, providing them with invaluable professional development opportunities. This has allowed for a ground swell of new dance information in the community and has had a direct impact in the development of the now Annual Community Dance Showcase.

D'n'A is continuing to increase its presence across the state with its expansion in to the Far Western Eyre Peninsula, assisting the communities of Wudinna, Streaky Bay and Ceduna in developing the Get Down (Get Dance Out West Now) Project. This project has encouraged these communities to pool their resources at both council and community level raising a total of \$61,795 through a variety of grant applications including to the Australia Council's Community Partnerships program. This project continues to grow by allowing artists in townships outside of this circle to be included and has encouraged primary and secondary schools in the region take up the opportunity of extending artist stays which value add to the project as a whole.

Some of the key projects which took place in 2009-10 included:

- Restless in the Riverland – Riverland Special School: Restless worked with approximately 60 students ranging from 5 to 23 years of age at the Riverland Special School. All students had an intellectual disability and 12 had a physical disability as well. Following the workshop period Restless and the students developed a performance showcasing what the students had learned during the 16 full days of activity. The successful performance entitled 'From the Ground Up' was performed at the Chaffey Theatre, Renmark to great acclaim from the audience.
- Riverland Dance Showcase: This project provides an opportunity for dance makers, performers and dance lovers from across the Riverland to show their work in a professional environment. The showcase encouraged participation from all sectors of the community and was designed to allow the people living in the community to share their common passion for dance, regardless of their technical proficiency. In addition it provides an opportunity to showcase professionally developed work (see below).
- AC Arts - This year AC Arts performed their mid year performance 'So the Story Goes' choreographed by Peter Sheedy, senior contemporary dance lecturer, as part of the Riverland Dance Showcase. As part of their visit to the region, AC Arts was also able to deliver workshops to senior school students in Waikerie and Loxton. This initial exchange has the following benefits: providing young potential dancers from the Riverland region the opportunity to develop an understanding of type of work the AC Arts produces; providing information to potential students as to what is required of them if or when they audition for the AC Arts dance program; allowing AC Arts to put an identification program in place for future students; and in the long-term creating an exchange of skills from the regions through the Centre and back to the region.
- Jess Statton – Dance Educator - Renmark Junior Primary School: Jess Statton an Adelaide based dance educator, who has worked regularly for D'n'A completed her final practical teaching placement at Renmark Junior Primary School in May/June. Jess made a particular request to be placed in the Riverland because of her previous positive experiences working in the community through D'n'A. Country Arts SA was able to support Jess and the Renmark Junior Primary School by providing access to the Chaffey Theatre during rehearsals for the Riverland Dance Showcase. This allowed the young people she had been working with to experience the bright lights of the stage, this was exceptionally exciting for the students and the parents who took time out to support their children. In addition, Jess worked with some of the senior girls in three of the region's dance schools, providing them with choreographic development and performance skills.
- Riverland Dance Skills Challenge - Riverland Field Days: Each of the secondary schools in the Riverland region were given the opportunity to participate in a half day workshop with Rachel Mendham, Jessica Statton and Angela McMillan. The workshops gave the students a variety of creative tools to develop their own

choreography. The completed choreography was performed at the Riverland Field Days in September 2009.

- The Riverland Blak Nite Dance Crew Project: A young group of aboriginal students from both Renmark and Glossop High Schools worked regularly with Angela McMillan to create dance works which were presented at the Riverland Field Days, SAIYWAT - a three day event focused on the importance of sharing culture and being proud about your identity and the Spirit Festival – a major event bringing together Aboriginal and Torres Strait Islander people from urban, regional and remote communities from across Australia and the state through song, dance, music and story telling. The project was designed to build the group's confidence, improve their personal self image, develop added learning skills, teach them about benefits of working together to achieve interpersonal goals and required them to take ownership and responsibility for their work.
- Katie Cook Lindsay – Australian Talented Youth Project: Identified during the Riverland Blak Nite Dance Crew Project, Katie Cook Lindsey was offered the opportunity to travel to Canberra and participate in The Australian Talented Youth Project; a biennial event for young Australians held in Canberra to coincide with Australia Day celebrations. Dance mentor Hayley Schmidt was very impressed by Katie, as were a number of others, in particular Johnathan and Agapy Efkarpidis of the Molonglo Group who became her philanthropic supporters during her stay and who have requested to be kept informed of her progress.
- GET DOWN (Get Dance Out West Now) kicked off in late February 2010 with Soul Capoeira. The program is running smoothly in all three communities of Wudinna, Streaky Bay and Ceduna. With ten workshops running between April and June, the program has been enthusiastically received. Participants have travelled from as far away as Elliston and station country out the back of Wurrulla to attend both the Streaky Bay and Ceduna Soul Capoeira workshops.

## WHYALLA ART PRIZE

Long established as a major regional art award, attracting entries from artists nationwide, the Whyalla Art Prize is now a biennial award and one of the richest acquisitive awards in Australia.

The prize was held 15 October – 13 November 2009. Over 400 entries were received, with the majority from outside SA, making it one of the most competitive fields to date.

Major sponsor of the prize, the Corporation of the City of Whyalla once again contributed the \$25,000 prize money for the main prize, with OneSteel contributing \$500 for the Most Promising Young SA Artist 17 Years of Age and Under.

The prizes were awarded as follows:

- City of Whyalla Art Prize – Neil Haddon (TAS), Portrait with Paperchains
- Most Promising Young SA Artist (18-26) – Kate Gagliardi
- Most Promising Young SA Artist (u17) – Year 5 Port Lincoln Gardens Primary.
- People's Choice - Tony Winberg (WA).

The judging panel for the 2009 award were Steven Carson (2007 winner and Head of Sculpture at the University of South Australia), Peter Walker (Peter Walker Fine Arts) and Libby Raupach OAM (former Director of the Helpmann Academy).

## **CORPORATE PARTNERSHIPS**

Corporate Partnerships are a vital link in the ongoing development of Country Arts SA's programs and interaction with regional communities and the ability to provide opportunities for regional South Australians to access and participate in arts and cultural activities.

### **ETSA Utilities**

ETSA Utilities is the Principal Corporate Partner of County Arts SA's Statewide Performing Arts Touring Season, which tours to regional theatres including the Sir Robert Helpmann Theatre, the Middleback Theatre, the Northern Festival Centre, the Chaffey Theatre and the Nautilus Theatre encompassing audiences across South Australia.

Additionally ETSA Utilities supported the Regional Centre of Culture in Murray Bridge as Twilight Symphony Partner.

ETSA Utilities is SA's electricity distributor, delivering power to more than 780,000 customers across the State. ETSA Utilities have a strong customer service ethos with a long standing community involvement culture.

### **Performing Arts Touring Partners**

Country Arts SA was pleased to welcome back REX Regional Express who continued as our Airline Partner during 2009-10. Their support of the program enables them to entertain clients and staff at Country Arts SA Performing Arts Touring Shows. With air services to many of the regional centres which have Country Arts SA theatres this partnership continues to go from strength to strength.

### **Regional Centre of Culture Business Partners**

Country Arts SA was pleased that ElectraNet chose to support the Regional Centre of Culture Program in Murray Bridge as Youth Presenting Partner.

ElectraNet owns and manages the South Australian transmission system in the National Electricity Market (NEM). Best practice and management systems for environmental, technical and social planning have played an integral part to their infrastructure development for South Australia, delivering major capital projects worth over 300 million in recent years to the community.

Local sponsors who also assisted the Regional Centre of Culture through considerable in-kind support of the program included:

- The Advertiser (Official Newspaper Partner)
- The Murray Valley Standard (Local Media Partner)
- Power FM (Local Media Partner)

### **Visual Arts Touring Program**

International Art Services continues to support the Visual Arts Touring Program as transport partner.

International Art Services "IAS" is Australia's only national and transcontinental fine art transport, storage, packing and handling company.

## **New Land Gallery**

Portside Mitsubishi continued their support of the New Land Gallery based at Port Adelaide. Their continuing support of the program enables regional artists to showcase their work in a metropolitan location.

## **Chaffey Theatre**

In the Riverland the Renmark Paringa Council once again embraced the arts and the vision for the future growth of the Chaffey Theatre with their support as a Silver Ambassador.

## **ADVOCACY**

Country Arts SA continues to advocate on behalf of regional communities for arts infrastructure, programs and funding.

Country Arts SA maintains membership and representation on national, state and local bodies to ensure a regional perspective and informed equitable decision making on policy, programming and funding issues. During 2009-10 these included:

- SALA Festival Board
- South Australian Youth Arts Board
- Community Arts Network SA
- Creative Communities Network
- Riddoch Art Gallery Board, Mount Gambier
- Blue Heelers (regional performing arts touring)
- Long Paddock Forum
- National Exhibitions Touring Support Australia
- Independent Cinemas Association of Australia
- National Regional Arts Promoters Network
- Australian Performing Arts Centres Association
- National Association for the Visual Arts Ltd
- Regional Galleries Association of South Australia
- Regional Communities Consultative Council
- Regional Arts Australia (Vice President / President and Secretary)

## **REGIONAL STAFFING PARTNERSHIPS**

Regional partnerships are crucial to Country Arts SA's operations, providing significant support in the delivery of essential arts and cultural development programs and services to regional South Australians. Country Arts SA will continue to advocate and develop more region-specific partnerships.

### **Newly established arts development partnerships**

A number of new partnerships were developed in 2009-10 to support arts development activities in communities across the state.

Country Arts SA established a new staffing partnership with the District Councils of Ceduna and Streaky Bay (the first arrangement of its kind) which has enabled the employment of a professional Arts Officer to service the Far West of South Australia.

In April 2010 Country Arts SA, through its Local Stages program, and with the support of the Australia Council, commenced a digital arts project which will see three technologists build

Country Arts SA's capacity to develop a collaborative on line template for the evolution of new work and build the organisation's capacity to house and deliver new on line content.

In June 2010 Country Arts SA was pleased to receive a significant grant through the Indigenous Cultural Corporation (a Division of the Department of Environment, Water, Heritage and the Arts) which will enable Country Arts SA to establish a new statewide position of Indigenous Arts and Cultural Development Officer in August 2010.

During the year Country Arts SA also continues partnerships with the following:

- Port Pirie Regional Art Gallery
- Tatiara District Council
- Rural City of Murray Bridge
- The Barossa Council
- Port Augusta City Council
- Country Health SA - Mental Health Services

## **ARTS PARTNERSHIPS AND COLLABORATIONS**

In addition to the numerous collaborations undertaken within the Regional Centre for Culture program, the Performing Arts Touring Program, the Visual Arts Touring Program, the Local Stages Initiative and the Learning Connections program, the following were undertaken in 2009-10:

### **Performing Arts Centres' partnerships**

The 5 performing arts centre continued to work in 2009-10 to develop partnerships with organisations to deliver more screen and staged-based arts products to their communities.

Existing partnerships with numerous community and corporate organisations were maintained including tourism bodies and local councils.

### **South Australian Youth Arts Board**

Country Arts SA has a long-standing partnership with the South Australian Youth Arts Board and will continue to work with SAYAB to further develop the successful DVFM, Blak Nite and River Sites programs.

### **Regional Arts Promoters Network**

Country Arts SA staff participate in the national Regional Arts Promoters Network (RAPN), an initiative of Regional Arts Australia. The Network's main purpose is to increase the profile of regional arts across Australia.

This national network brings together marketing and communication staff from each of the state-based regional arts agencies to share ideas and practices and to work towards a sustainable, national regional arts communication strategy.

## Goal 3

---

### **Develop, operate and support arts and cultural facilities across regional South Australia**

Country Arts SA aims to develop, operate and support arts and cultural facilities across regional South Australia through:

- Implementing audience development initiatives in collaboration with other arts and non-arts organisations to ensure maximum use of facilities and presentation of a diverse range of activities
- Seeking additional funding sources and partnerships to progressively upgrade facilities and implement recommendations of building and technical equipment audits
- Promoting the venues to new and existing arts companies and commercial promoters as a viable circuit to tour their performances
- In collaboration with other Country Arts SA programs and government, community and business organisations implementing programs and activities to further develop Country Arts SA facilities as vital community hubs
- Reviewing and implementing customer service policies and procedures to ensure the best possible theatre experience for patrons
- Developing and implementing risk management and occupational, health, safety and welfare policies and procedures
- Assisting regional councils and community groups with advice and information for the development of arts facilities within their communities
- Advocating for further funding to be made available for the development of arts facilities in regional South Australia.

In 2009-10 Country Arts SA achieved the following:

#### **PERFORMING ARTS CENTRES**

Country Arts SA operates five performing arts centres on behalf of the State Government namely the Sir Robert Helpmann Theatre in Mount Gambier, the Chaffey Theatre in Renmark, the Northern Festival Centre in Port Pirie, the Middleback Theatre in Whyalla, and the Hopgood Theatre in Noarlunga. This state-wide circuit of regional theatres enables Country Arts SA to minimise costs to commercial promoters and local communities who use them, and provide access to arts and entertainment largely taken for granted in Australian capital cities.

In 2009-10 Country Arts SA presented 412 live performances and conferences and 1,367 film screenings in the five centres (including 1,110 screenings at the Whyalla Cinema) and approximately 174,000 tickets were sold for these events.

A summary of all activities presented in the centres is included at Appendix C.

#### **Capital Development**

Over the 2009/2010 year Country Arts SA received funding totalling approximately \$650,000 from the South Australian Government to undertake urgent maintenance and remedial projects at its performing arts centres. These projects included:

- Northern Festival Centre:

- Painting and sealing asbestos walkway platforms
- Testing fire hydrants
- Sir Robert Helpmann Theatre:
  - Replacement of airconditioner condenser units
  - Replacement of the lighting dimmer system
  - Improvement of roof safety
  - Improvement to the emergency lighting
- Middleback Theatre:
  - Replacement and repair of airconditioning units
  - Installation of new emergency and exit signage
  - Upgrading of the foyer and auditorium including new carpeting, seating, painting and the installation of a new FM hearing system and counter microphone system

In addition Country Arts SA purchased four 32 channel digital sound desks which were installed in Country Arts SA's four regionally based performing arts centres.

### **Middleback Theatre 25<sup>th</sup> Birthday**

The Middleback Theatre celebrated its 25<sup>th</sup> Birthday on the 9 March 2010. Celebrations commenced with the screening of a celebratory DVD produced in association with Southern Cross Television followed by the announcement of the auditorium refurbishment by the Minister Assisting the Premier in the Arts, the Hon John Hill.

### **Audience Development Initiatives**

During the year a number of audience development initiatives were maintained or improved to attract new audiences and to further improve theatre experience for existing audiences as follows:

- The Friends Club continues to attract patrons to all of the theatres, with special offers, ticket prices and tours available for members;
- In partnership with the School Screen again hosted a regional tour of films aimed at Primary and Secondary school children;
- The Morning Melodies program was continued at the Sir Robert Helpmann Theatre, the Hopgood Theatre and the Northern Festival Centre, specifically targeting older patrons;
- The "Just for Kids" program continued at Sir Robert Helpmann Theatre and Hopgood Theatre, presenting 'live' options for younger patrons in the school holiday period.

### **Business Development/Partnerships**

During the year a number of new initiatives were introduced or maintained aimed at increasing business opportunities and/or strengthening strategic partnerships including:

- Kids Flix for disadvantaged children were once again held at the Chaffey in partnership with the Arthritis Foundation;
- Country Arts SA theatres continued to generate income through ticket sales for external events and services and this business is expected to grow with the implementation of the new SABO ticketing system installed during 2008-09.

## **Venue Management and Advice**

Country Arts SA's 5 Venue Managers continued to meet every 6 to 8 week with relevant program managers to discuss issues such as maintenance, occupational health and safety, customer service, risk management, audience and business development, operational procedures, security, information technology, marketing and programming.

The Director Venues and Resources continued to represent South Australian venues on the Australian Performing Arts Centres Association and liaised with Venue Managers from Out of the Square venues to discuss matters of mutual concern and the establishment of a South Australian venue association. The Director Venues and Resources also assisted the Barossa Arts and Convention Centre through participation on the Centre's advisory committee.

Theatre staff continued to support local hirers and community groups with advice on the presentation of their arts activities.

Country Arts SA has also taken a leading role in advising the Rural City of Murray Bridge on venue management and has been contracted by Council to manage the opening phase of the new facility and to develop a set of operational policies and procedures. The Venue Manager, Hopgood Theatre has worked closely with Council staff to establish a computerised ticketing system, recommend pricing structures, train, roster and supervise casual staff, handle hiring enquiries and implement a comprehensive set of occupational health and safety and customer service policies and procedures. This work will continue until Council appoint a Venue Manager in October 2010.

## **Visual Art Spaces**

The 2009-10 year was the second year of a 3 year agreement with the Board of the Riddoch Art Gallery, which operates the gallery in Mount Gambier on behalf of Country Arts SA. Under the agreement, Country Arts SA's funding to the gallery was further increased. This arrangement continues to provide community ownership for the gallery's public programs. Country Arts SA also again contributed financially to the operational costs of the Port Pirie Regional Art Gallery.

Additionally, Country Arts SA supported the redevelopment of the Riddoch Art Gallery proposed by the City of Mount Gambier with a one-off grant of \$500,000.

The City of Mount Gambier was awarded \$5m from the Federal Government's Regional and Local Community Infrastructure Program for their Public Library/Community Centre and Main Corner Redevelopment. One of the key elements of the project is to refurbish the upper areas of the former King's Theatre (now Riddoch Art Gallery) premises to ensure its long term preservation and for community use as a vital part of the entire precinct.

Re-development of the ground floor and basement areas of the Riddoch Art Gallery premises will include: the retention of the front offices with improved access; creation of a theatrette and separate multifunctional/occupiable community space linked to the adjoining civic buildings and ground floor; access from basement to upper levels noting emergency evacuation requirements; enhanced entry to the Riddoch Art Gallery; reconfigured and enhanced access between levels (basement, ground floor, stage level, administration level and renovated first floor); effective undercover unloading zone; new toilet facilities and work room including disabled access; and the installation of a commercial kitchen to provide a complete conference and events facility.

During 2009-10 Country Arts SA also managed the following visual arts spaces:

- River Lands Gallery in Berri;
- Chaffey Theatre Foyer Gallery in Renmark; and
- Middleback Theatre Foyer Gallery in Whyalla.

Both the River Lands Gallery in Berri and the re-developed Murray Bridge Town Hall Gallery space were supported by Country Arts SA through improved publications, with both receiving assistance to design and print high quality exhibition programs for distribution.

Work has still not commenced on the proposed Whyalla Art Gallery. There was considerable debate within the Whyalla community over the proposed site for the gallery, with Council finally endorsing the original site, the TAFE building adjoining the Middleback Theatre and Whyalla Cinema. The South Australian Government provided the City of Whyalla a grant of \$400,000 in 2007-08 for the purposes of building a high quality gallery space.

Country Arts SA Arts Development Officers contributed to the management of many other regional galleries including the Cultural Centre Precinct in Port Augusta, Bordertown Civic Centre Walkway Gallery, the Streaky Bay Gallery and Supper Room Studio; and the Murray Bridge Regional Gallery. These spaces also show exhibitions sourced independently and are used for meetings, workshops, forums and other events.

Country Arts SA also manages the New Land Gallery in Port Adelaide, which provides opportunities for regional artists to exhibit in a metropolitan space, as well as exposure to commercial networks and the media, and increased sales opportunities.

## Goal 4

---

### **Maintain a creative and successful organisation that is a leader in the arts in Australia**

Country Arts SA aims to maintain a creative and successful organisation that is a leader in the arts in Australia through:

- Developing, implementing and maintaining effective human resource policies and practices which support and value staff
- Developing IT solutions to effectively promote regional arts practice and opportunities to external stakeholders and ensure good communication practices within the organisation
- Developing and maintaining positive relationships between the Board of Trustees, specialist committees and staff
- Maintaining and developing an effective, efficient and responsive budget management process for all divisions of the organisation
- Maintaining and developing an effective and efficient IT infrastructure across the organisation to provide continuous improvement in operational efficiencies
- Maintaining and implementing effective risk management and occupational health, safety and welfare policies and procedures
- Regularly reviewing Country Arts SA's organisational structure to ensure it reflects changing priorities and practices
- Developing and maintaining initiatives to reduce the organisation's carbon footprint and reliance on scarce resources in line with current government policies and priorities.

In 2009-10 Country Arts SA achieved the following:

#### **FINANCIAL ISSUES**

##### **Financial Report 2009-10**

Over the 2009-10 financial year Country Arts SA achieved a small cash surplus. After allowing for grants held in advance, Country Arts SA achieved a positive working capital of, in excess of \$300,000 as at 30<sup>th</sup> June 2010. This represents an outstanding financial result for Country Arts SA given the difficult economic circumstances confronting much of regional South Australia.

Country Arts SA acknowledges the funding support received from Arts SA, from its sponsors including ETSA Utilities, Regional Express Airlines, ElectraNet, International Art Services and Portside Mitsubishi. Without their support, it would not be possible for Country Arts SA to continue to provide its broad range of arts programs to regional communities.

Country Arts SA would also like to acknowledge the financial support received from the Australian Government through the Department of Environment, Water, Heritage and the Arts for the Regional Arts Fund and its support from Playing Australia, the Visual Arts and Crafts Board and the Theatre Board of the Australia Council for the Arts for Country Arts SA's Visual Arts Touring program and support for the Local Stages SA Regional Theatre Initiative.

##### **Contractual Arrangements**

Country Arts SA has not entered into contractual arrangements where the total expenditure exceeds \$4 million and the contract extends beyond a single year.

## **Fraud**

Country Arts SA has well documented internal controls and procedures that are designed to detect any possibility of fraud occurring within the organisation. To date there have been no instances of ongoing fraudulent activity.

## **Account Payment Performance**

Country Arts SA has maintained an efficient account payment performance throughout 2009-10 as follows:

<b>Particulars</b>	<b>Number of Accounts Paid</b>	<b>% of Total Accounts Paid</b>	<b>Value in \$A of Accounts Paid</b>	<b>% of Total Accounts Paid</b>
<b>Paid by Due Date *</b>	6,519	93.58%	\$11,940,685	94.69%
<b>Paid late &amp; paid &lt; 30 days from the due date</b>	401	5.76%	\$614,886	4.88%
<b>Paid late &amp; paid &gt; 30 days from the due date</b>	46	0.66%	\$54,422	0.43%

\* The due date is defined as per 11.2 of the Treasurer's instruction. Unless there is a discount or a written agreement between the public authority and the creditor, payment should be within thirty days of the date of the invoice or claim.

## **MANAGEMENT OF HUMAN RESOURCES**

### **Staffing**

During 2009-10 a total of 9 staff resigned and 7 were recruited. These changes are reflected in the staff list at Appendix G.

The net reduction of 2 officers is mainly due to:

- Three employees accepting the State Governments redundancy packages (TVSPs).
- Offset by the recruitment of a Theatre Services Officer based at the Hopgood Theatre.

### **Staff Training and Development**

Country Arts SA actively encourages the personal development of its employees.

In addition, professional staff including Arts Officers and Venue Managers are encouraged to attend at least one relevant conference each year such as National and State regional arts conferences and Venue Management Association, National Exhibition Touring Association, and Performing Arts Centres Association annual conferences.

Total training expenditure was 1% of total remuneration or approximately \$37,000. The following table indicates the proportion of (non-salary related) training expenditure by salary bracket:

Salary Bracket	Actual 2009-10
\$0 - \$38,599	14%
\$38,600 - \$49,999	20%
\$50,000 - \$65,999	39%
\$66,000 - \$85,999	19%
\$86,000 +	8%

### **Disability Action Plan**

During 2009-10 the priority work was the installation of more wheelchair access and new hearing systems in the Middleback Theatre. Provision for 5 wheelchair spaces has been made on the right hand side of the auditorium with the construction of removeable platforms and balustrades to enable ease of access. New sound loops and a counter system for the hearing impaired were also installed as part of the refurbishment.

### **Employees Overseas Travel**

During the 2009-10 year one employee completed an overseas trip for a professional development opportunity with the Edinburgh Fringe Festival. Travel was taken 16/08/2009 to 31/08/2009.

### **Workforce diversity**

Country Arts SA recognises the value of a diverse workforce representative of the community that it serves and provides equal employment opportunities. Information regarding workforce diversity, including disability, background and age are included in the staff profile summary at Appendix F.

### **Voluntary flexible working arrangements**

Country Arts SA supports the individual needs of staff with regard to managing their work and other responsibilities and interests. A number of employees are involved in their own artistic projects and endeavours and Country Arts SA provides flexibility with hours to enable staff to attend rehearsals, performances, exhibitions and other commitments. This is largely achieved through time off in lieu of additional hours worked.

During 2009-10 two staff members had a formalised part time work from home arrangement, and numerous other staff were supported to work from home on a needs basis. During 2009-10 53 female staff members and 29 male staff members had part-time employment arrangements.

### **Equal Opportunity Employment**

Country Arts SA is committed to the principles of equal opportunity employment for all staff.

### **Performance Management**

Country Arts SA has in place a Performance Management system which provides for all contracted staff to have performance plans and 6 monthly performance and development discussions with their immediate supervisors.

### **Customer Service**

Country Arts SA is committed to delivering excellent customer service and continually looks at ways to improve this service. During the reporting period all policies relating to customer service in Country Arts SA venues were reviewed.

### **Occupational Health Safety and Injury Management**

During 2009-10 there was one new claim. The following table summarises the current claim with payments made during the year.

## Workers Compensation Claims 2009-2010

Location	No. of Claims	Date of Accident	Claim Type	\$ claimed at 30/6/10	Claim cost to date	Claimed 2009/10
Middleback Theatre, Whyalla	1	13/1/10	Slips Trips and Falls	0	0	0

## Asbestos Management

ANNUAL ASBESTOS MANAGEMENT REPORT 2009-10				
Category	Number of Sites		Category Description	Interpretation One or more item(s) at these sites...
	At start of year	At end of year		
1	0	0	Remove	should be removed promptly.
2	2	2	Remove as soon as practicable	should be scheduled for removal at a practicable time.
3	1	3	Use care during maintenance	may need removal during maintenance works.
4	1	4	Monitor condition	has asbestos present. Inspect according to legislation and policy
5	2	2	No asbestos identified / identified asbestos has been removed	(All asbestos identified as per OHS&W 4.2.10(1) has been removed)
6	0	0	Further information required	(These sites not yet categorised)

### Definitions:

**Category:** The site performance score, determined by the lowest item performance score at each site.

**Number of Sites in Category:** A count of how many sites have the corresponding site performance score, with separate counts done at the start and the end of each year.

**Category Description:** Indicates the recommended action corresponding to the lowest item performance score (recorded in the asbestos register by a competent person, as per OHS & W Regulations (SA) 1995, 4.2.10).

**Interpretation:** A brief real-world example of what each category implies for a site.

## Energy Efficiency

As Country Arts SA received no annual funding for capital development in its 2009-2010 budget, no energy saving initiatives were able to be implemented during the financial year.

Country Arts SA's overall energy consumption is affected by a number of factors including, the aging plant and equipment, the level of usage of its theatres and prevailing weather conditions.

There was a slight increase in electricity consumption during 2009-10 of 2.6% compared to 2008-09.

## Information Technology

2009-10 was again a year of consolidation with a focus on improving stability of existing infrastructure and maintaining high service levels for the workforce.

Achievements for 2009-10 included:

- *Port Adelaide server room: Three second-hand servers commissioned and UPS installed*

During August 2009 three used Dell 1950 rack mount servers were purchased to replace the failing old desktop computers that had been pressed into service for windows update management, anti-spam filter, antivirus update management and monitoring functions.

In early July 2009 a faulty UPS in the server room was replaced and upgraded with an extended runtime 2200VA unit on a second power circuit. Power protection is now provided by two UPS units. New UPS monitoring software was also installed to all venue servers and UPS units. the condition and available runtime of the UPS units in Head office and all five venues can now be readily reviewed.

- *Commissioning of the new Finance server and Migration of Accpac and Micropay.*  
In December 2009 new Dell Finance server was commissioned, and all finance applications were moved over to the new server in late January.

- *Statewide Antivirus software Upgrade/Cross grade.*

The rollout of Trend Micro Worry Free Security was undertaken between January and March 2010. Virus and Malware protection is now provided with a two tier approach whereby email is first scanned at the mail server with Symantec Antivirus, and then at the desktop with Trend Antivirus. This split approach avoids exposure due to the limitations of single vendor protection.

- *Statewide Server software Upgrade.*

During late June, all six regional domain controller servers were upgraded in rotation from Windows server 2000 to Windows server 2003 R2. This work was undertaken to address business risks associated with Microsoft withdrawing support for the Windows 2000 operating system. The oldest server in the fleet, a Dell PE1600 was also replaced with a Dell PE2650.

- *BlackBerry Enterprise server installation.*

In late June the free "Blackberry Enterprise Server express" email and management software for smart phones was installed onto the corporate email server. This allows full synchronization of email, calendar, tasks, contacts, and notes between staff desktops and their blackberry smart phones. Additionally the enterprise software permits remote management of the phones and their software application suite. Phones that are lost or stolen can now be remotely disabled and wiped clean.

## **Consultants**

During 2009-2010 South Australian Country Arts Trust engaged Hassell Pty Ltd on two separate occasions to provide expert specialist advice in relation to the following:

- Conduct audits of the four theatres and provide a detailed report on the scope of work needed to update the theatres including any expansion requirements; \$20 745 (excl GST).
- Middleback Theatre refurbishment consultancy - Investigate and select appropriate new seat fabric for the auditorium and new carpet for the auditorium and foyer; and report on possibilities for a foyer upgrade; \$12 300 (excl GST)

## Changes to Organisation

There were no major changes to the organisation in 2009-10.

### Whistleblowers Protection Act 1993

Country Arts SA has appointed a responsible officer for the purposes of the *Whistleblowers Protection Act 1993* pursuant to Section 7 of the *Public Sector Act 2009*.

In 2009-10 there have been no instances of disclosure of public interest information to a responsible officer of Country Arts SA under the *Whistleblowers Protection Act 1993*.

The current structure is reflected in the Organisational Chart at Appendix E.

## STRATEGIC PLANNING

Country Arts SA continues to work to the Strategic Plan 2008 - 2011 which was developed with input from the Board of Trustees and Country Arts SA's senior staff in November 2007. It is a working reference document providing guidance to Trustees, regional board members and staff. It will be regularly reviewed by the Trust during its life-span.

The Strategic Plan was reviewed by the Board of Trustees at its meeting held in December 2009.

The plan reflects several State and Federal Government documents and agreements, including:

- *South Australia's Strategic Plan Creating Opportunity* March 2004 in particular objective four Fostering Creativity and objective five Building Communities;
- *Arts – The Heart of South Australia: Strategic Directions for South Australia* December 2003
- Country Arts SA's annual performance agreement with Arts SA
- Country Arts SA's Strategic Framework Document for delivery and administration of the Australian Government's Regional Arts Fund.

In early 2009 the South Australian Government established a process to examine Governance frameworks of all of the Arts Portfolios' Statutory Bodies (13 Acts) with the aim of ensuring contemporary and complimentary arrangements across the Arts Portfolio. Country Arts SA considered and agreed to the proposed amendments to the South Australian Country Arts Trust Act, 1992. It was expected that the Arts Governance Bill would be tabled in Parliament during the later half of 2010.

## INFORMATION STATEMENT AND FREEDOM OF INFORMATION ACT 1991

### PART II SECTION 9 (2)

#### AGENCY STRUCTURE AND FUNCTIONS - SECTION 9 (2) (A)

Information relating to the organisational structure of Country Arts SA, its objectives and functions, legislation and resource levels is contained elsewhere in the Annual Report and is deemed to be consistent with the requirements of the Freedom of Information Act, 1991.

#### EFFECT OF AGENCY'S FUNCTIONS ON MEMBERS OF THE PUBLIC – SECTION 9 (2) (B)

Country Arts SA has a direct effect on the general public through:

- the management of theatres located in Whyalla, Port Pirie, Renmark, Mount Gambier and Noarlunga
- the touring of visual arts exhibitions and the performing arts;
- the provision of human and financial resources for community cultural development activities;

Details of the activities undertaken by Country Arts SA during 2009-10 are included elsewhere in the Annual Report.

**ARRANGEMENTS FOR PUBLIC PARTICIPATION IN POLICY FORMULATION –  
SECTION 9 (2) (C)**

Country Arts SA operates within the broad framework of the Government's Arts Policy Statement.

There is community representation on the Board of Trustees and the views of these representatives are taken into consideration in all policy formation.

**DESCRIPTION OF KINDS OF DOCUMENTS HELD BY THE AGENCY –  
SECTION 9 (2) (E) (F)**

To access Country Arts SA documents, it is necessary to apply in writing under the Freedom of Information Act, with an accompanying application fee of \$21.50, to:

The Director, Venues and Resources  
Country Arts SA  
2 McLaren Parade  
PORT ADELAIDE SA 5015  
Telephone (08) 8444 0400

---

**Auditor General's Statement**

**Performing Arts Touring Activities**

---

**Appendix A**

**Performing arts touring activities  
For the financial year ended 30 June 2010**

<b>Production</b>	<b>Performed</b>	<b>Theatre</b>	<b>Dates</b>	<b>Total Audience</b>	<b>Workshops</b>
<b>Mainstage – 2009</b>					
<b>Melbourne Comedy Festival</b>	Hopgood Theatre	Noarlunga	Thu 2 Jul	206	
	Sir Robert Helpmann Theatre	Mt Gambier	Fri 3 Jul	528	
				<b>734</b>	<b>-</b>
<b>Letters End</b>	Nautilus Theatre	Pt Lincoln	Tue 14 Jul	240	
	Middleback Theatre	Whyalla	Thu 16 Jul	196	
	Northern Festival Centre	Pt Pirie	Sat 18 Jul	190	
	Hopgood Theatre	Noarlunga	Tue 21 Jul	170	
	Chaffey Theatre	Renmark	Thu 23 Jul	384	
	Sir Robert Helpmann Theatre	Mt Gambier	Sat 25 Jul	459	
				<b>1639</b>	<b>-</b>
<b>Baby Boomer Blues</b>	Chaffey Theatre	Renmark	Mon 10 Aug	155	
	Sir Robert Helpmann Theatre	Mt Gambier	Wed 12 Aug	203	
	Hopgood Theatre	Noarlunga	Fri 14 Aug	153	
	Brenton Langbein Theatre	Tanunda	Sat 15 Aug	102	
	Northern Festival Centre	Pt Pirie	Tue 18 Aug	125	
	Middleback Theatre	Whyalla	Thu 20 Aug	121	
	Nautilus Theatre	Pt Lincoln	Sat 22 Aug	208	
				<b>1067</b>	<b>-</b>
<b>Taming of the Shrew</b>	Sir Robert Helpmann Theatre	Mt Gambier	Tue 15 Sep	399	
	Chaffey Theatre	Renmark	Thu 17 Sep	300	
	Brenton Langbein Theatre	Tanunda	Sat 19 Sep	212	
	Northern Festival Centre	Pt Pirie	Tue 22 Sep	235	
	Middleback Theatre	Whyalla	Wed 23 Sep	168	
	Nautilus Theatre	Pt Lincoln	Fri 25 Sep	239	
				<b>1553</b>	<b>-</b>
<b>Nightcafe</b>	Sir Robert Helpmann Theatre	Mt Gambier	Mon 12 Oct	219	
	Chaffey Theatre	Renmark	Wed 14 Oct	175	
	Hopgood Theatre	Noarlunga	Fri 16 Oct	182	
	Northern Festival Centre	Pt Pirie	Mon 19 Oct	144	
	Middleback Theatre	Whyalla	Wed 21 Oct	194	
	Nautilus Theatre	Pt Lincoln	Fri 23 Oct	176	
				<b>1090</b>	<b>-</b>
<b>Mainstage – 2010</b>					
<b>Godzone</b>	Sir Robert Helpmann Theatre	Mt Gambier	Fri 5 Feb	256	
	Chaffey Theatre	Renmark	Tue 9 Feb	207	
	Northern Festival Centre	Pt Pirie	Fri 12 Feb	205	
	Nautilus Theatre	Pt Lincoln	Wed 17 Feb	179	
	Hopgood Theatre	Noarlunga	Sat 20 Feb	306	
				<b>1153</b>	<b>-</b>
<b>Co-Opera's La Boheme</b>	Keith Michell Theatre	Pt Pirie	Fri 5 Mar	129	
	Hopgood Theatre	Noarlunga	Sat 8 May	248	20
				<b>377</b>	<b>20</b>
<b>Shorter+Sweeter</b>	Sir Robert Helpmann Theatre	Mt Gambier	Tue 27 Apr	177	5
	Hopgood Theatre	Noarlunga	Thu 29 Apr	96	2
	Middleback Theatre	Whyalla	Sat 1 May	86	5
	Nautilus Theatre	Pt Lincoln	Tue 4 May	173	10
	Keith Michell Theatre	Pt Pirie	Thu 6 May	123	5
	Brenton Langbein Theatre	Tanunda	Fri 7 May	120	30

	Chaffey Theatre	Renmark	Sat 8 May	109	11
				<b>884</b>	<b>68</b>
<b>The Age I'm In</b>	Nautilus Theatre	Pt Lincoln	Fri 14 May	125	20
	Chaffey Theatre	Renmark	Fri 21 May	110	20
	Sir Robert Helpmann Theatre	Mt Gambier	Tue 25 May	190	20
				<b>425</b>	<b>60</b>
<b>Melbourne Comedy Festival Roadshow</b>	Hopgood Theatre	Noarlunga	Thu 17 Jun	182	
	Nautilus Theatre	Port Lincoln	Fri 18 Jun	219	
	Middleback Theatre	Whyalla	Sat 19 Jun	224	
	Northern Festival Centre	Port Pirie	Mon 21 Jun	193	
	Chaffey Theatre	Renmark	Tue 22 Jun	365	
	Sir Robert Helpmann Theatre	Mt Gambier	Thu 24 Jun	356	
				<b>1539</b>	<b>52</b>
<b>Shows on the Road – 2009</b>					
<b>A Country Dance</b>			Fri 17/Sat 18 Jul		
	Mil Lel Hall	Mt Gambier	Jul	132	
	The Bordertown Civic Centre	Bordertown	Mon 20 Jul	47	
	Lameroo Memorial Hall	Lameroo	Tue 21 Jul	37	
	Renmark Institute	Renmark	Wed 22 Jul	23	
	Waterside Hall	Port Adelaide	Thu 23 Jul	90	
	Walleroo Town Hall	Walleroo	Sat 25 Jul	15	
	Institute Theatre	Pt Augusta	Sun 26 Jul	51	
	Ceduna Memorial Hall	Ceduna	Tue 28 Jul	56	
				<b>451</b>	<b>-</b>
<b>Guitar Heaven</b>	Ceduna	Ceduna	Fri 4 Sep	69	
	Institute Theatre	Pt Augusta	Mon 7 Sep	67	
	Ascot Theatre	Kadina	Tue 8 Sep	40	
	Lameroo	Lameroo	Wed 9 Sep	18	
	Bordertown Civic Centre	Bordertown	Thu 10 Sep	53	
	Naracoorte	Naracoorte	Fri 11 Sep	35	
				<b>282</b>	<b>-</b>
<b>Co-Opera, Carmen</b>	John Dohler Hall	Murray Bridge	Fri 6 Nov	107	
	Institute Theatre	Pt Augusta	Fri 13 Nov	54	
	Football Club	Ceduna	Sun 15 Nov	80	
				<b>241</b>	<b>-</b>
<b>Shows on the Road – 2010</b>					
<b>Needle and the Damage Done</b>		Pt Augusta	Sat 27 Feb	91	
		Ceduna	Tue 2 Mar	80	
		Kadina	Thu 4 Mar	48	
		Balaklava	Fri 5 Mar	17	
		Lameroo	Sat 6 Mar	41	
		Naracoorte	Tue 9 Mar	31	
				<b>308</b>	<b>149</b>
<b>Special Performances 2010</b>					
<b>Middleback 25th Birthday</b>	Middleback Theatre	Whyalla	Tue 9 Mar	200	
				<b>200</b>	<b>-</b>
<b>School's Program – 2010</b>					
<b>Patch Theatre Co, Sharon Keep Ya' Hair On!</b>		Pt Pirie	Tue 8 Jun	987	
		Mt Gambier	Thu 10 Jun	591	
		Murray Bridge	Wed 16 - Thu 17 Jun	416	
		Noarlunga	Tue 22 - Fri 25 Jun	2787	
				<b>4781</b>	<b>-</b>
<b>State Theatre Co of SA</b>	Town Hall	Murray Bridge	Wed 2 June	123	

**The 7 Stages of Grieving**

Chaffey Theatre	Renmark	Fri 4 Jun	174
Sir Robert Helpmann Theatre	Mt Gambier	Mon 7 Jun	109
Northern Festival Centre	Pt Pirie	Thu 10 Jun	353
Nautilus Theatre	Pt Lincoln	Tue 15 Jun	377
Middleback Theatre	Whyalla	Thu 17 Jun	293
Hopgood Theatre	Noarlunga	Fri 18 Jun	193

---

**1622**

-

---

## **Visual arts touring activities for year ended 30 June 2010**

**Appendix B**

**Visual arts touring activities  
For the financial year ended 30 June 2010**

<b>Exhibition Title</b>	<b>Gallery</b>	<b>start date</b>	<b>end date</b>	<b>Total visitations during exhibition period</b>
<b>Kym Needle</b>	Moonta Gallery	4-Jul-09	31-Jul-09	365
	Jamestown Belalie Art Gallery	1-Sep-09	1-Oct-09	67
	Millicent Art Gallery	1-Feb-10	10-Mar-10	1203
	Port Augusta Cultural Centre Gallery	9-Apr-10	1-May-10	175
				<b>1810</b>
<b>Portable Worlds-2nd Edition</b>	Hahndorf Academy Gallery	7-May-10	20-Jun-10	12,500
				<b>12,500</b>
<b>Our Mob 08 Touring</b>	Streaky Bay Rural Transaction & Visitor Information Centre	3-Aug-09	14-Sep-09	695
	Roxby Downs Regional Gallery	1-Oct-09	26-Oct-09	144
	Hahndorf Academy Art Gallery	6-Nov-09	6-Dec-09	14,122
	Burra Regional Art Gallery	7-Jan-10	4-Feb-10	183
	Jamestown Belalie Art Gallery	1-Mar-10	28-Mar-10	159
	Berri, River Lands Gallery	2-Apr-10	30-Apr-10	250
	Naracoorte Art Gallery	7-May-10	28-May-10	650
	Kadina Ascot Theatre Gallery	4-Jun-10	30-Jun-10	504
				<b>16,707</b>
<b>Hinterland</b>	Port Pirie Regional Art Gallery	3-Jul-09	2-Aug-09	915
	Berri, River Lands Gallery	7-Aug-09	2-Oct-09	300
	Port Augusta Cultural Centre Gallery	9-Oct-09	1-Nov-09	259
				<b>1,474</b>
<b>....In The Top Paddock</b>	Bordertown Civic Centre Walkway Gallery	3-Aug-09	26-Aug-09	350
	Naracoorte Art Gallery	1-Sep-09	28-Sep-09	277
<b>My Sacrum</b>	Roxby Downs Regional Gallery	10-Jul-09	9-Aug-09	110
				<b>110</b>
<b>Design Now</b>	PORT LINCOLN Civic Hall Galleries	5-Aug-09	6-Sep-09	1,108
	HAHNDORF Academy Gallery	5-Feb-10	21-Mar-10	11,292
				<b>12,400</b>
<b>Parallel</b>	Port Adelaide, New Land Gallery	31-Jul-09	27-Sep-09	3,347
	Tanunda, Barossa Regional Gallery	15-Oct-09	29-Nov-09	82
	Millicent, Art Gallery	5-Dec-09	14-Jan-10	1,117
	Port Augusta Cultural Centre Gallery	21-Jan-10	20-Feb-10	189
	Berri River Lands Gallery + Renmark Chaffey Theatre	26-Feb-10	31-Mar-10	130
				<b>4,865</b>
<b>Ripples in the Sand</b>	Whyalla, Middleback Theatre Foyer Gallery	20-Jul-09	23-Aug-09	5,662
	Elliston Community Hall	1-Sep-09	30-Sep-09	560
	Streaky Bay Information & Rural Transaction Centre	12-Oct-09	23-Nov-09	1,655

	New Land Gallery Port Adelaide	25-Jan-10	19-Feb-10	2042
	Tanunda Barossa Regional Gallery	17-Mar-10	18-Apr-10	394
	Port Pirie Regional Art Gallery	23-Apr-10	30-May-10	1875
				<b>12,188</b>
<b>the sea</b>	Moonta Town Hall Gallery	7-Aug-09	23-Aug-09	322
	Goolwa South Coast Regional Art Centre	30-Aug-09	27-Sep-09	540
	Port Pirie Northern Festival Centre	10-Nov-09	7-Feb-10	4,395
	Tanunda Barossa Regional Art Gallery	11-Feb-10	14-Mar-10	352
	Streaky Bay Rural Transaction & Visitor Information Centre	25-Mar-10	31-May-10	1413
	Elliston Community Hall	7-Jun-10	25-Jul-10	434
				<b>7,456</b>
<b>Le Chéile</b>	Bordertown Civic Centre Walkway Gallery	1-Sep-09	30-Sep-09	200
	Port Adelaide New Land Gallery	27-Nov-09	17-Jan-10	1,950
	Kapunda Community Gallery	1-Feb-10	28-Feb-10	188
	Hahndorf Academy Art Gallery	26-Mar-10	2-May-10	10,346
	Berri River Lands Gallery	10-May-10	15-Jun-10	150
				<b>12,834</b>
<b>Maralinga: The Anangu Story</b>	Port Lincoln Civic Hall Galleries	3-May-10	23-May-10	981
	Goolwa Fleurieu Cultural Centre	28-May-10	27-Jun-10	1,000
				<b>1,981</b>
			<b>TOTAL</b>	<b>84,952</b>

**New Land Gallery exhibitions**

---

**Appendix B cont.**

## New Land Gallery exhibitions

Exhibition Title	Number of artists	Start Date	End Date	Number of visitors
<b>New Land Gallery</b>				
Through A Northern Lens - Germein Art Focus	7	15-Jun-09	24-Jul-09	1,323
Parallel	10	31-Jul-09	27-Sep-09	3,347
Allure - Cindy Durant	1	6-Oct-09	20-Nov-09	1,451
Le Chéile	19	27-Nov-09	17-Jan-10	1,950
Ripples in the Sand	14	25-Jan-10	19-Feb-10	2,042
While - Roxanne Prime	1	8-Mar-10	28-May-10	980
<b>TOTAL = 7 exhibitions</b>	<b>52</b>			<b>11,093</b>
<b>New Land Gallery Foyer Space</b>				
Through A Northern Lens - Germein Art Focus	7	15-Jun-09	24-Jul-09	1,323
Parallel	10	31-Jul-09	27-Sep-09	3,347
Pixels and Propane – Kerry Youde	1	6-Oct-09	20-Nov-09	1,451
Le Chéile	19	27-Nov-09	17-Jan-10	1,950
Starting from Scratch – Detlef Baumer	1	25-Jan-10	19-Feb-10	2,042
Elliston to Cactus-Heading West – Simon Smith	1	8-Mar-10	28-May-10	980
<b>TOTAL = 7 exhibitions</b>	<b>39</b>			<b>11,093</b>

---

## **Theatre usage summary as at June 2010**

---

**Appendix C**

## Theatre Usage Summary as at 30 June 2010

	Middleback Theatre	Northern Festival Centre	Chaffey Theatre	Sir Robert Helpmann Theatre	Hopgood Theatre	TOTAL
<b>COUNTRY ARTS SA SEASON</b>						
Performances YTD	6	8	8	8	8	38
Total Attendances	990	1,344	1,784	2,200	1,496	7,814
2008-09 Performances YTD for comparison	10	11	9	7	6	43
<b>THEATRE PRESENTATIONS</b>						
Performances YTD	1	5	3	4	9	<b>22</b>
Total Attendances	142	555	504	720	1,134	<b>3,055</b>
2008-09 Performances YTD for comparison	11	14	13	10	11	59
<b>COMMERCIAL HIRINGS</b>						
Performances YTD	14	23	18	18	19	<b>92</b>
Total Attendances	4,424	8,280	5,490	6,066	6,422	<b>30,682</b>
2008-09 Performances YTD for comparison	10	8	15	11	1	45
<b>COMMUNITY HIRINGS</b>						
Performances YTD	36	15	25	51	114	<b>241</b>
Total Attendances	10,692	4,230	7,225	14,637	29,754	<b>66,538</b>
2008-09 Performances YTD for comparison	32	22	17	53	106	230
<b>CONFERENCES</b>						
Performances YTD	10	1	2	4	2	<b>19</b>
Total Attendances	1,720	50	280	1,372	76	<b>3,498</b>
2008-09 Performances YTD for comparison	6	2	4	3	1	16
<b>LIVE - TOTAL</b>						
Performances YTD	67	52	56	85	152	<b>412</b>
Total Attendances	17,968	14,459	15,283	24,995	38,882	<b>111,587</b>
2008-09 Performances YTD for comparison	69	57	58	84	125	393
<b>FILM SCREENINGS</b>						
Screenings	1,110	102	155	0	0	<b>1,367</b>
Total Attendances	29,970	12,648	19,840	0	0	<b>62,458</b>
2008-09 Performances YTD for comparison	1,119	93	141	8	0	1,361
<b>TOTAL LIVE / FILMS</b>						
Perf / Screenings YTD	1,177	154	211	85	152	<b>1,779</b>
Total Attendances	47,938	27,107	35,123	24,995	38,882	<b>174,045</b>
2008-09 Performances YTD for comparison	1,188	150	199	92	125	1,754

**Grants paid for 2009-10**

---

**Appendix D**

Applicant	Project Description	Amount Approved
<b>Regional Arts Fund Community Projects Program</b>		
Yorke and Lower North Health	<p><i>Eat My Shorts</i> Eat My Shorts is a short film festival for youth aged between 12 - 25 years held in the Lower North Region. The program involves students from senior schools involved in the program as extra curricular activity, as well as individuals and groups outside of the school system who wish to be involved in film making. Participants will learn skills around story boards, camera angles and techniques, editing software and various IT programs and copyright issues of music in film.</p>	\$3,000
Frances Folk Gathering	<p><i>Folk Fundamentals</i> Folk Fundamentals will celebrate the music of the land and promote interest in the diversity of culture through the fundamental elements of life. Folk Fundamentals is the theme for the 2010 Frances Folk Gathering. Performers Jeanette Wormald, The Lazy Farmer's Sons and Cloudstreet will embrace story telling through words, music, dance and art. Folk Fundamentals will celebrate the four elements of water, air, fire and earth and our relationship to them.</p>	\$5,832
Dudley Writers Group	<p><i>Performance of Original Writing</i> The Dudley Writers Group wish to engage Stephen House to mentor one person in directing including mentoring writers in editing and assist them to produce a performance of their own writing in January 2010.</p>	\$6,240
Port Augusta Youth Focus	<p><i>Muso Magic</i> An intensive two day music workshop which will successfully engage youth to develop life skills and improved self esteem through song writing and live performances. Adam Thompson (lead vocalist of Chocolate Starfish, ARIA award winner, 200,000 albums sold world wide) will guide young people through the process of writing and recording their own original track, develop a film clip and putting on a live performance.</p>	\$7,320
Ninkowar Incorporated	<p><i>Ngarrindjeri Mimiran Kykulan Project</i> Ngarrindjeri women across the Mallee, Coorong and Southern Fluerieu Region (Meningie, Raukkan, Tailem Bend, Victor Harbor and Murray Bridge) would like to advance their choral skills and have a choral trainer come into the community to work with them over a period of 6 months to create more challenging compositions and build their confidence to write their own songs.</p>	\$10,800
2010 Beachport Festival	<p><i>Sea-Fari Community Arts Workshops</i> A series of community workshops (to include students, youth and adults) aiming to educate and inform the Beachport community about the natural environment of the region. Sea- Fari Community Art Workshops will be a part of the biennial Beachport Festival by the Sea artistic and cultural celebration for 2010.</p>	\$14,720

The Farm Gaters	<i>The Inaugural Alexandrina Farm Gate Festival</i> This project encourages collaborations between professional Artists and Farmers to create public art on farm gates in the rural heartland in Alexandrina. The festival aims to increase cultural activity in the region. Project includes artists John Bradford, Liz Yelland, Barbary O'Brien, Rob Hylton, Helen Stacey, Leigh Marshall, Audrey Kooyman, Michael Tye and Ngarrindjeri artist Edie Carter.	\$14,980
Cobdogla Primary School	<i>Memorial Garden Mural and Community Garden Aesthetics</i> For a local artist Shane Karpany to work with the community and students to design and create a Community Memorial Garden Mural. The painting of a culturally significant mural on the side wall of a school building which is highly visible to the community and all people who enter the Riverland region.	\$1,000
Riverland Youth Theatre Inc	<i>BigSmoke</i> BigSmoke brings together children aged 5 to 10 years, Riverland Youth Theatre members, youth aged 16 to 26 years and professional artists for consultation, creative development, production and touring of a new work for young children.	\$10,000
Baramera District War Memorial Community Centre	<i>Lake Bonney Men's Art Project</i> Workshops for local men with artist Gerry McMahon to create art works for Lake Bonney foreshore in Baramera. Gerry will work with local men to develop concepts for a sculptural piece that will be the first of a series of works for the foreshore area.	\$11,200
Communities of Ceduna Wudinna and Streaky Bay	<i>Get Down (Get Dance Out West Now)</i> A twelve month program of dance workshops and skills development in the Far and Mid West regions of Ceduna, Wudinna and Streaky Bay beginning in February 2010. Get Down will engage 14 professional dance practitioners to deliver hip hop, breakdance, contemporary dance, belly dance, line dance, tango and salsa programs.	\$7,920
Kungan Ngarrindjeri Yunnan Steering Group	<i>Ripples in the Water (working title)</i> A professional curator will assist the Murray Bridge community to conduct workshops with Ngarrindjeri artists and also mentor a young Aboriginal artist to curate an exhibition - 'Ripples in the Water - working title' as an outcome of the project.	\$18,300
Riverland Youth Theatre Inc	<i>5X5</i> 5X5 is five x-art, x-generation and x-community youth arts projects converging into a celebration of 25 years of art by young people. The projects will include stories, artworks, dance and movement, circus skills, writing and group devised performances.	\$6,000
The Feral Foods Collaborations Team	<i>Feral Foods</i> Feral Foods is a community project involving people of the Central Flinders Ranges contributing stories, interviews, research and film materials for a collaborative film project exploring traditions, subcultures and stories of life that revolve around foods and flavours.	\$9,000

Port Augusta City Council	<i>Arid Sculptural Event #4 – Workshops</i> This project covers the In The Bin Short Film Festival/Workshop and a basket making workshop with Virginia Kaiser and is part of the Arid Sculptural Event #4 program.	\$3,300
Ceduna District Health Service	<i>MusoMagic</i> A musical experience involving 60 youth from the community, writing, producing and recording a song that is ready to be played over air.	\$4,540
Murray Bridge South Kindergarten	<i>Murray Bridge Children's Centre Community Arts Project 'As part of the 'Murray Bridge Regional Centre of Culture'.</i> The 'Murray Bridge Children Centre's Community Arts Project' will provide an opportunity for individuals of all ages, physical abilities and cultural backgrounds to engage in design and construction of mosaic pillars, murals and seats that will be situated at the Murray Bridge Children's Centre.	\$14,788
District Council of Tumby Bay	<i>'Do you remember when....?'</i> This Centenary project will bring together past, present and future visual imagery of this region, depicted in a public artwork, on a significant site at Tumby Bay.	\$4,602
Fleurieu Folk Festival Inc	<i>2010 Fleurieu Folk Festival 'Step into the Music' Workshops Program</i> A feature workshop program within the Fleurieu Folk Festival that enables performers in the local community and Fleurieu Region to access the unique skills, experience and knowledge provided by visiting professional performers through a series of workshops. We expect them to gain expertise that will assist them to further develop their own careers and help create further performance opportunities.	\$8,500
Dudley Writers Group	<i>Writing for the Stage</i> To develop local writing for the stage and produce 'Island Life 2011' a performance of theatre pieces written specifically for the stage.	\$9,113
Tutti Ensemble Inc	<i>Real 2 Real OskaBrightSA</i> Tutti Ensemble will consult with regional communities and disability organisations and artists to develop a film making project similar to the Oska Bright model involving disabled artists.	\$5,000
Spirit Women	<i>Earth to Spirit Spring Fair</i> The Earth to Spirit Spring Fair will include performing and visual art workshop programs, which will contain a culturally diverse range of art practices through hands on participation in a 'village type fair' environment.	\$2,775
JamaeRaw School Of the Arts	<i>UpRaw Workshops</i> A program to develop the skills of 70 young people in circus skills, clowning/stage combat, dance and acting for preparation towards a performing arts festival.	\$1,700

Peterborough Art & Cultural Festival Committee	<i>Reflections</i> Tasmanian artists Ruth Rees and Pam Thorne will conduct workshops on creating papier-mache sculptures as a community art project, reflecting the culture, diversity and historical development of Peterborough and District. The community will collaborate with the project artists to fabricate sculptural works depicting significant local characters and events that reflect local culture and the diversity of the local communities.	\$5,742
<b>Regional Arts Fund New Communities Program</b>		
Edge2Centre	<i>Andamooka Bohemian Cabaret</i> The Bohemian Cabaret matches local musicians with visiting professional musicians to produce a concert of Australian music as part of the Andamooka Opal Festival.	\$3,200
Youth Versus Alcohol Committee	<i>Youth Versus Alcohol</i> This project will engage the big hART team to undertake an extensive community consultation and research process throughout the Limestone Coast Area.	\$5,000
<b>Regional Arts Fund Opportunities for Regional Artists – Category 1 Professional Development</b>		
Kelly Wegener	<i>Dance Mentorship</i> Kelly Wegener, an emerging dance artist in the Riverland, will undertake professional development activities to develop her skills as a dancer, choreographer and educator. Mentored by three Adelaide based dance artists and choreographers – Peta Johnston, Katrina Lazaroff and Jade Earlandsen.	\$4,593
The Artists Voice	<i>CONTRAPPUNTO</i> Curatorial Mentorship, professional and skill development for Hills artists in a region of escalating population growth. Fulvia Mantelli has agreed to mentor our members, Monika Morgernstern and Kathleen Munn, and work with our group towards achieving our aim of exhibiting at New Land Gallery in 2010 and ultimately be accepted into the touring program to gain a wider audience for our works.	\$3,950
Alysha Herrmann	<i>PressureLands - Stage 1 – Community Consultation &amp; Early Creative Development</i> A professional development opportunity for emerging Riverland Theatre & Community. Artist Alysha Herrmann to lead community consultation followed by creative development with a youth theatre ensemble towards the first draft of script called, 'PressureLands'.	\$3,000
Roger Norris-Green	<i>Historical Novel based on life in 1880's Kadina - 'Secrets'</i> To assist writer Roger Norris-Green to conduct research, including travel costs associated with completing a trilogy of fiction works about Kadina and the Yorke Peninsula. The final work entitled 'secrets' will incorporate local Indigenous stories and people, never published in a novel before.	\$500

<b>Regional Arts Fund Opportunities for Regional Artists – Category 2 Artist Led Initiatives</b>		
Michelle Murray	<i>The Book of Feathers</i> Playwright Michelle Murray to produce an original professional theatre production, The Book of Feathers, in partnership with the Alexandrina Council in order to help create and foster a vibrant original professional theatre culture in the community. A Book of Feathers will be produced, directed and performed in Goolwa for the 2010 Adelaide Fringe Festival with local artist Sharon Lambers, Deborah Tapfield, The Goolwa Performing Youth Arts Group, Wet Paint Productions and the Willunga Dance Troup.	\$7,000
Lennard Smith	<i>The Line of Friendship</i> Nineteen year old Lennard Smith to direct and shoot 'The Line of Friendship', a 30 min short film in Naracoorte, South Australia with members of the local community. This is a no budget film where all props and equipment are 'in kind' support.	\$3,000
Cindi Drennan	<i>Interactive Textiles Workshops</i> A series of workshops involving regional textile artists to develop skills and knowledge in innovation textile art forms, leading to a creation of new tourable work. This project proposal involves Interactive Textiles' workshops organised and convened by Cindi Drennan and held in three regional centers in South Australia (Flinders Ranges, Murray Bridge and Mount Gambier).	\$6,400
Ink Pot Arts Inc	<i>Ophelia's Shadow Theatre</i> Ophelia's Shadow Theatre is an inter generational Puppet- Theatre project, celebrating the elderly. Puppetry artists Tis Milner-Nichols and Tony Hannan are key artists. Young people will work with project artists & elderly residents.	\$12,000
<b>Regional Arts Fund Regional Arts Partnership Program</b>		
Slingsby Theatre Company Limited	<i>Slingsby Program 2007-2009 (Year 3)</i> A three year program of sophisticated original touring theatre productions with high production values designed for 10 year olds and up no matter where the live. Slingsby will create one new show annually. The planned productions for 2007, 2008 and 2009 are; THE TRAGICAL LIFE OF CHEESEBOY, WOLF and MAN COVETS BIRD.	\$20,000
Carclew Youth Arts Centre Inc.	<i>The Swap 2010</i> The Swap 2010 supports Murray Bridge bands for performances and industry development opportunities in Murray Bridge and Adelaide as a part of the 2010 Regional Centre of Culture.	\$12,000
Oak Valley Inc	<i>Desert Oak Project... the beginning</i> The Oak Valley community is seeking to engage two experienced professional artists over a fifteen month period to work with Indigenous artists and community members in the Far West for two series of intra regional skills development workshops in painting.	\$10,000

Feast Lesbian and Gay Cultural Festival	<i>Queer Gifted and Blak 4 (QGB4)</i> 'Queer Gifted and Blak' is a project of Feast Festival. The project will provide mentoring and skills development for regional and remote Indigenous performers, dancers and songwriters who identify as transgender or queer. The project provides a series of workshops which will develop skills and provide a performance outcome on the theme of family.	\$18,540
Australian Festival for Young People, aka Come Out	<i>Play Me I'm Yours' Piano Murals Project</i> In 2011, the Come Out Festival will deliver 'Play Me, I'm Yours' in South Australia as a statewide community public art (mural) and music program for children and the general public; including regional and remote areas, people with a disability, young people from a variety of cultural backgrounds and Aboriginal people.	\$14,490
<b>Regional Arts Fund Strategic Initiatives</b>		
Country Arts SA	<i>Riverland Dance Initiative</i> In early 2008 with funds provided through 2007/2008 Regional Arts Fund Recipient Initiated Projects Country Arts SA engaged a specialist Choreographer to provide new professional dance opportunities for people, in particular young people, residing in the Riverland/Mallee region of South Australia. It has been proposed and approved that this initiative be continued for a further two years and in partnership with Country Arts SA and the Regional Arts Fund support the cost of the choreographer's salary, funding of workshops, skills development workshops and mentorships.	\$68,000
<b>Regional Arts Fund Quick Response</b>		
Centacare	<i>Town of Gawler Writing Course and Workshop</i> Request for financial support in enrolling Alisha Elizabeth to attend tailored writing course and workshop for by widely published author and teacher Jeff Guest. Program would run for 20 weeks from July through to December at the Gawler Library (scheduled Tuesday 10am - 12 noon weekly). Over the last few years Alisha has been using creative writing techniques as a therapeutic tool to enable her to positively deal with sever anxiety issues. If successful Alisha will use funding to further develop her skills in creative writing.	\$300
District Council of the Copper Coast	<i>Sensqui Centenary Sculpture Consultation</i> For CCD artists and consultant to run community consultation sessions with the Copper Coast Council area regarding a permanent sculpture to be developed in 2010 as part of the Sensqui Centenary Celebrations.	\$1,500
Monika Morgenstern	<i>Masterclass with Godwin Bradbeer</i> Two day intensive life drawing workshop - perception, conception, proportion, anatomy, linear expression of the human subject. Primary focus of the workshop is the development of a body of drawings that are informed by the human body. Working demonstration and critical discussion	\$500

will be an integral part of the program.

Tatiara Tourism Group	<i>Public art for the Community</i> Artistic and Community Cultural Development with the documentation and publication of a journey of delight via the many significant public art works across the Tatiara.	\$1,000
Boystown	<i>Muso Magic</i> Over a two day workshop with Adam Thompson (singer/songwriter – Australian rock band Chocolate Starfish) and Glenn Bidmead (singer/songwriter/tech) young people will create and write a song responding to the theme of multiculturalism, act out and develop a film clip and create art work for the CD and cover. The song will be played on the radio on day two of the workshop finishing with a performance to the public of the song and film clip.	\$1,500
Alysha Herrmann	<i>World Interplay 2009</i> Request for Alysha Herrmann to attend and participate as an Australian delegate at World Interplay 2009 - an International Youth Playwrights Festival from the 12th to the 23rd August 2009.	\$920
Ngarrindjeri Lands & Progress Association	<i>Ngarrindjeri Cultural Project 2010 – PHASE ONE</i> Request for funding assistance for the 2009 research phase of the Ngarrindjeri Cultural Project happening in 2010. Research phase will enable research visits to view traditional artefacts, cultural visits for the collection of materials, receive tuition from master artists, explore traditional and contemporary methods and materials.	\$1,496.80
The Cellar Folk Club Inc.	<i>Andy Salvanos Workshop and Concert</i> An Intimate concert and musician's workshop with Andy Salvanos, one of the the highly skilled performers in Australia, who play the unique 'Chapman Stick'	\$580
Big hART	<i>Ngapartji Ngapartji attendance at the 2009 Garma Festival</i> A group of Pitjantjatjara all male performers have been invited to perform at the 2009 Garma Festival representing the Anangu Pitjantjatjara Lands in South Australia. To do so the group requires assistance with travel costs to attend. The groups aims to perform a section of the Ngapartji Ngapartji theatre show and present aspects of current community development projects currently being undertaken in the Anangu Pitjantjatjara Lands.	\$1,500
Peter Sharrock	<i>Connections with Coober Pedy</i> An opportunity has arisen at very short notice for Peter Sharrock to provide skills development workshops and project development advice to both students and artists from Coober Pedy Area School and general Umoona Community. Workshops with students will cover the design and application of motifs, graphics, patterns, etc for the design of a football guernsey to be worn during the Indigenous Power Games at Football Park in Adelaide on the 28 <sup>th</sup> and 29 <sup>th</sup> August.	\$1,200

Tis Milner-Nichols	<i>Sydney PD Residency</i> One month residency with Marrickville Council in NSW for professional development. Tis Milner-Nichols will engage with the local communities through a street art festival '2042' plus contact Sydney galleries and puppetry companies.	\$1,500
Rikina Dancers	<i>Participation in Dance Site by Rikina Dancers</i> Rikina Dancers to travel to the annual Desert Mob DanceSite event, coordinated presented by Art back NT, held at Alice Springs Telegraph Station on 05/09/09	\$1,380
Port Germein Progress Association	<i>Port Germein Youth Hip Hop Dance Project</i> To provide a school holiday project for the disadvantaged youth of Port Germein where they can learn more about themselves through the genre of modern hip hop dance.	\$650
Helen Burgemeister	<i>Attendance at National Mosaics Symposium</i> Request for Helen Burgemeister to attend the 2009 Mosaic Association of Australia and New Zealand Groundswell National Symposium and Exhibition.	\$1,500
Barossa Regional Gallery	<i>National Public Galleries Summit</i> Request for assistance to attend the National Public Galleries Summit in Townsville. This summit is specifically designed for art gallery staff and their professional development.	\$774
Port Lincoln Aboriginal Community Council	<i>Desert and APY Lands trip</i> Professional Development tour to significant indigenous communities of South Australia, continuing to DesArt in Alice Springs and prominent art centres in the APY Lands.	\$1,240
Mallee Health Service Inc	<i>Pinnaroo Bike &amp; Sk8 Park Painting</i> To provide an artist and paints for an aerosol art workshop, to paint plywood boards that will be secured at the Pinnaroo Bike and Sk8 Park. Project aims to provide young people the opportunity to learn new skills around art and creative expression, cooperation, respect and build new relationships.	\$944
Mark Smerdon	<i>APY Lands Delegate to the Australian World Music Expo</i> Attend Australian World Music Expo in Melbourne as an invited delegate to lift the profile of Central Desert Bands at the invitation of Patrick McCloskey, Manager, Partnerships and Sponsors	\$1,492
Port Elliot Arts and Cultural Development Committee	<i>Performance Workshops for Drummers</i> Organize performance training workshops to enhance performance capabilities and skills of local drummers and percussionists for community performances, specifically for Lakala Fair Jan 2010	\$1,500
Renmark and Paringa Community Carols in the Garden	<i>Renmark and Paringa Community Carols Singing Workshops</i> Desiree Frahn will present 4-5 professional singing choral workshops for the Riverland Community Participants will perform at the Renmark Paringa Community Carols in the Garden.	\$1,200

Penneshaw Quilters	<i>'Double Take'</i> Lorraine Crocker, from Adelaide will teach a new technique of 'Quilt as you go reversible quilting' over a two day workshop in Penneshaw	\$720
Kurruru Indigenous Youth Performing Arts Inc.	<i>Riverland Dance Mob</i> To provide the opportunity for the Riverland dance group to perform alongside Kurruru at this year's Spirit Festival	\$1,109.80
Rafael Godoy	<i>Port Fairy Folk Festival</i> To attend performance and workshops at the Port Fairy Folk Festival. This will provide interaction with local/International musicians and the opportunity to learn new skills to bring back to his community.	\$1,203
Kapunda Community Gallery Inc	Printmaking Workshop in conjunction with Le Cheile Exhibition Two day Printmaking workshop, open to community, for up to 10 people to participate in learning woodcuts, collagraph, screen printing, polychromatic.	\$1,280
Jo Jo Spook	Lakelight Sculpture Exhibition and Professional Development Limestone Coast Artist JoJo Spook has been offered professional development training at the Lakelight Sculpture Exhibition set at Lake Jindabyne, NSW in April 2010.	\$1,500
D'Faces of Youth Arts Inc	Fringe Parade 2010 D'Faces have been invited by the Adelaide Fringe Festival to be a part of the inaugural 2010 Fringe Parade in Adelaide.	\$790
Julie Waddington	<i>Dramaturgies #4</i> Julie Waddington has been invited to be part of the Negotiating Difference working group which is a closed session of the Dramaturgies #4 event. A project for the development of the dramaturgies in C21.	\$500
Alysha Herrmann	<i>Adelaide Fringe Theatre Assessor</i> Attendance and participation at 2010 Adelaide Fringe Festival in capacity of Adelaide Fringe Volunteer Theatre Assessor 19 <sup>th</sup> February to 6 <sup>th</sup> March.	\$495
Port Lincoln Aboriginal Community Council Inc.	Desert to Dunes Traditional Dances/Singers Traditional Indigenous Dances from the Far West Community to perform at the launch of Desert to Dunes Visual Art Exhibition Port Lincoln March 2010.	\$1,500
Riverland Textile Artists	<i>Grampians Texture</i> Attend Grampians Texture held at Halls Gap, Victoria where a 'myriad' of workshops will be offered under the inspiring direction of local, national and international tutors.	\$850

Cynthia Durant	<i>Enamel on Metal Workshop with Elizabeth Turrell and the Jewellers and Metalsmiths Group of Australia conference in Perth.</i> Attending Enamel on Metals 3 day workshop with Elizabeth Turrell and the Jewellers and Metalsmiths Group of Australia Conference in Perth.	\$1,500
Port Augusta Performing Arts Inc	<i>Swinging and Singing – The Great American Songbook with the Elder Conservatorium Big Band.</i> Provide local musicians in the Port Augusta community with an opportunity to play with and learn from more experienced musicians (Elder Conservatorium) from the metro area.	\$1,500
Riverland Textile Artists	<i>Samantha Pope Workshop</i> Samantha Pope is a textile artist who has had articles published in international magazines and she is willing to conduct a 2 day techniques workshop in the Riverland.	\$828
Port Augusta Quilters Guild Inc	<i>Antique Tea Roses And Almost Wedding Rings Workshop</i> This project will provide skills, training and professional development for quilters in Port Augusta.	\$1,130
Ink Pot Arts Inc	<i>Youth Carnival</i> Ink Pot's Youth Carnival offers free workshops to 12 – 26 year olds (with professional visual and performing artists) and entertainment during National Youth Week 2010.	\$ 1,250
Bridge Patches and Quilters Incorporated	<i>'Luscious Living Landscapes' Workshop</i> A two day workshop to teach design and methods/techniques for students to use in the creation of 'Art Quilts' and/or wall hangings.	\$967
Dudley Writers Group	<i>Writing for the Stage</i> Over a two day workshop with Stephen House, to explore the intricacies of writing for the stage.	\$1,000
Yvette Frahn	<i>Mentorship with Gerry McMahon on Lake Bonney Sculpture Project</i> Undertake mentorship with community artist and sculptor Gerry McMahon during Lake Bonney Men's Art Project to learn about community arts processes and practices from conception to conclusion. The aim is to grow this knowledge in the community.	\$1,500
Debra Fuschtei	<i>Travel Assistance</i> Travel Costs for Debra Fuschtei to attend professional development opportunities and speak about Port Augusta Aboriginal Arts at Tourism Futures conference in Brisbane.	\$1,357
<b>Arts Development Skills Development</b>		
The Creative Daze Group	<i>Creative Paper: Paper Making from Natural Materials</i> Three natural materials paper making workshops are to be held at the South Coast Regional Arts Centre in Goolwa for artists and craftspeople from the wider Alexandrina region. Jan Marinos is a paper maker, community artists and teacher who runs a paper making business in Burnie, Tasmania -Australia's paper making capital.	\$1,320

Julianne Woodruff	<i>Festival of Ceramics</i> Five day workshop with Jackie Gasson exploring new techniques in ceramics and extending skills in hand building and decoration. Tutor Jackie Gasson is a professional potter from Queensland. The workshops will be organised by David Walker of Walker Ceramics and held at Yarra Valley Grammar School.	\$603
Southern Fleurieu Health Service	<i>Introductory Community Singing Leader Training</i> Founder of the Vocal Nosh, Fay White, is a community singing leader and trainer. The South Coast Community Singing Group hopes to deliver quality training to community members interested in developing their own community singing groups. Workshops will include singing, techniques for teaching by ear, collection and learning of suitable songs, group dynamics and information about the health benefits of singing.	\$1,220
Dave Wade	<i>Montreal Kino Kabaret Film Festival</i> Artist professional development	\$1,200
Judith Kempen	<i>Travel Assistance - Creative Stimulus 2009</i> Travel assistance from Peterborough to Murray Bridge to attend the Country Arts SA Creative Stimulus 2009 State Forum in November.	\$250
Blyth Regional Cinema Inc	<i>Clare Valley Film Festival Workshop and Q&amp;A</i> The project is for beginners and young film makers with a focus on low to no budget filmmaking. We aim to arm Australians with the skills to tell their stories through film. Workshop instructors include Chris Bishop, Dan Bradley and Seeta Indrani.	\$1,215
Murray Bridge Lace Guild	<i>Colour in Torchon/ Bucks Simplified/ Invisible Joins</i> The project aims to develop and further the skills of our local lace-makers in both Torchon and Bucks Point lace techniques. Emphasis on Torchon will be the use of colour and for bucks simplified turning of corners. Both groups will learn 'invisible finishing' off of worked pieces.	\$2,070
Mpulaarra Art Group	<i>Printmaking Workshop</i> Printmaking workshop for group members to try working in a new medium and explore different ways of applying printmaking techniques under the instruction of community artist Tina Moore.	\$1,072
Regina McKenzie	<i>Wesfarmers Arts Indigenous Fellowship</i> Travel Assistance: Regina McKenzie request funds to attend the Wesfarmers Arts Indigenous Fellowship workshops. Wesfarmers is the new partnership between the National Gallery of Australia and Wesfarmers designed to foster the next generation of professional Indigenous leaders in the visual arts.	\$700

Brett Spilsbury	<i>Travel Assistance - Creative Stimulus 2009</i> Travel assistance from the Riverland to Murray Bridge to attend the Country Arts SA Creative Stimulus 2009 State Forum in November.	\$250
Margaret Lynne Telfer	<i>Travel Assistance - Creative Stimulus 2009</i> Creative Stimulus 2009. Workshops on the 6th and 7th of November 2009	\$79
Elisabeth Jones Ingman	<i>Travel Assistance - Creative Stimulus 2009</i> Creative Stimulus 2009. Workshops on the 6th and 7th of November 2009	\$50
Brenda Nankivell	<i>Travel Assistance - Creative Stimulus 2009</i> Attending ' get that show on the road' workshop.	\$50
Heather Shearer	<i>Travel Assistance - Creative Stimulus 2009</i> Creative Stimulus 2009. Workshops on the 6th and 7th of November 2009	\$317
Robert Miles	<i>Travel Assistance - Creative Stimulus 2009</i> Creative Stimulus 2009. Workshops on the 6th and 7th of November 2009	\$375
Anne Miles	<i>Travel Assistance - Creative Stimulus 2009</i> Creative Stimulus 2009. Workshops on the 6th and 7th of November 2009	\$125
Nancy Mattinson	<i>Travel Assistance - Creative Stimulus 2009</i> Creative Stimulus 2009. Workshops on the 6th and 7th of November 2009	\$190
Beryl Watson	<i>Travel Assistance - Creative Stimulus 2009</i> Creative Stimulus 2009. Workshops on the 6th and 7th of November 2009	\$190
Yvette Frahn	<i>Travel Assistance - Creative Stimulus 2009</i> Creative Stimulus 2009. Workshops on the 6th and 7th of November 2009	\$130
Odette Pearson	<i>Ausdance SA Dance Teachers Day 2009</i> A day of professional development, a chance to get together with other dance teachers and be involved in dance classes and resource sharing sessions.	\$467.65

Gawler Branch of the Embroiderer's Guild of SA	<i>Beautiful Embroidery Workshop in Gawler</i> A workshop teaching traditional Shisha embroidery and Dorset Button Embroidery to a very high standard producing quality work.	\$743
Kykulan Mimirar	<i>Ngarrindjeri Kykulan Mimirar</i> Project Choir Leader For two Kykulan Mimirar members to be mentored by Trace Canini and Vonda Last in the art of choir leading over a period of 5 months.	\$4,500
Thumbprint Workshop Inc	<i>Artist's Book Workshop</i> Two day artist's bookmaking workshop using Japanese Bookbinding techniques with renowned printmaker Dianne Longley.	\$1,509
Rising Damp Youth Performing Arts Incorporated	<i>Focalize</i> Focalize is a template for mobilizing a community to meet in a public space or gathering where a series of events fusing projection art and performance take place.	\$1,720
Belalie Arts Society Inc	<i>'Lights, Camera, Dance'</i> A workshop to learn about dance and develop skills in putting together a professional DVD developed around a theme relating to Jamestown and environs.	\$1,720
Caltowie Harmony Chorus	<i>Travel Assistance - Gospel Singing Workshop Tony Backhouse</i> Travel Assistance to attend a Gospel Singing Workshop with Tony Backhouse	\$440
Martin van Rooijen	<i>Travel Assistance - 2010 Regional Arts Australia National Conference</i> Travel Assistance for the 2010 Regional Arts Australia National Conference for Martin Van Rooijen	\$766
Helen Van Rooijen	<i>Travel Assistance - 2010 Regional Arts Australia National Conference - Helen Van Rooijen</i> Travel Assistance for the 2010 Regional Arts Australia National Conference for Helen Van Rooijen	\$766
Maz McGann	<i>Travel Assistance : National Regional Arts Conference 2010 Launceston Tasmania – Maz McGann</i> Travel Assistance provided to Maz McGann to attend the 2010 Regional Arts Australia National Conference in Tasmania. Maz is community artist (professional development opportunity).	\$900
Port Augusta City Council	<i>Travel Assistance : National Regional Arts Conference 2010 Launceston Tasmania</i> Travel Assistance provided to Ellenor Day to attend the 2010 Regional Arts Australia National Conference in Tasmania.	\$900
Helen Ware	<i>Travel Assistance : National Regional Arts Conference 2010 Launceston Tasmania – Mary Ware</i> Travel Assistance provided to Mary Ware to attend the 2010 Regional Arts Australia National Conference in Tasmania. Mary is community arts worker (professional development opportunity).	\$1,200

D'Faces of Youth Arts Inc	<i>Travel Assistance : National Regional Arts Conference 2010 Launceston Tasmania – Michelle Callaghan</i> Travel Assistance provided to Michelle Callaghan to attend the 2010 Regional Arts Australia National Conference in Tasmania. Michelle is community artist (professional development opportunity).	\$1,200
Amanda Franklin	<i>Travel Assistance : National Regional Arts Conference 2010 Launceston Tasmania - Amanda Franklin</i> Amanda is an arts worker in the Port Lincoln community and wishes to attend the National Conference to further develop her skills and knowledge to work with the Kuju Aboriginal artists and the wider Wangka Wilurara Region.	\$1,200
<b>Arts Development Shows on the Road</b>		
Port Lincoln Arts Council Inc	Piano Violin Duo Performance of Piano Violin Duo on Saturday 18th October 2009 at the Boston Bay Winery, Port Lincoln. Mark Freer and Warwick Adeney have been frequent visitors to perform in Port Lincoln and have built up a strong following within the community.	\$625
Bordertown Arts Council Inc.	GAL: Hot Spell Performance of Klara McMurray's 'Hot Spell' in the Old Mundulla Hotel on Sunday the 14th March 2010. Bordertown Arts Council Inc have successfully presented 'Little Black Dress' in the hotel and feel 'Hot Spell' is another performance that will appeal to a similar audience.	\$265
Port Lincoln Civic Hall Management Board Inc	GAL: Almost Anything Goes (Morning Melodies) Morning Melodies has proven a success with the older section of Port Lincoln's population who enjoy going out for a performance during the day. The local nursing homes and retirement villages have been good supporters of the concert in previous years. A real theatre experience as well as a social event is offered with the value adding services on the side such as morning tea's, raffles, etc.	\$500
Cleve Arts Council Incorporated	<i>GAL: Desperadoes</i> The company Whyalla Players have performed previously in Cleve and were extremely popular attracting patrons from Cleve, Cowell, Arno Bay, Rudall, Lock, Kimba and Tumby Bay. Interest in this type of show indicates a lack of similar shows and it is felt the district is ready for another Whyalla Players performance.	\$445
PEAK (Promoters of Entertainment & Arts in Keith)	GAL: Amity Dry 'Mother Wife and the Complicated Life' Amity Dry 'Mother Wife and the Complicated Life' is a performance that the members of PEAK feel would appeal to our regional audience as it takes a humorous look at the modern day family structure.	\$475

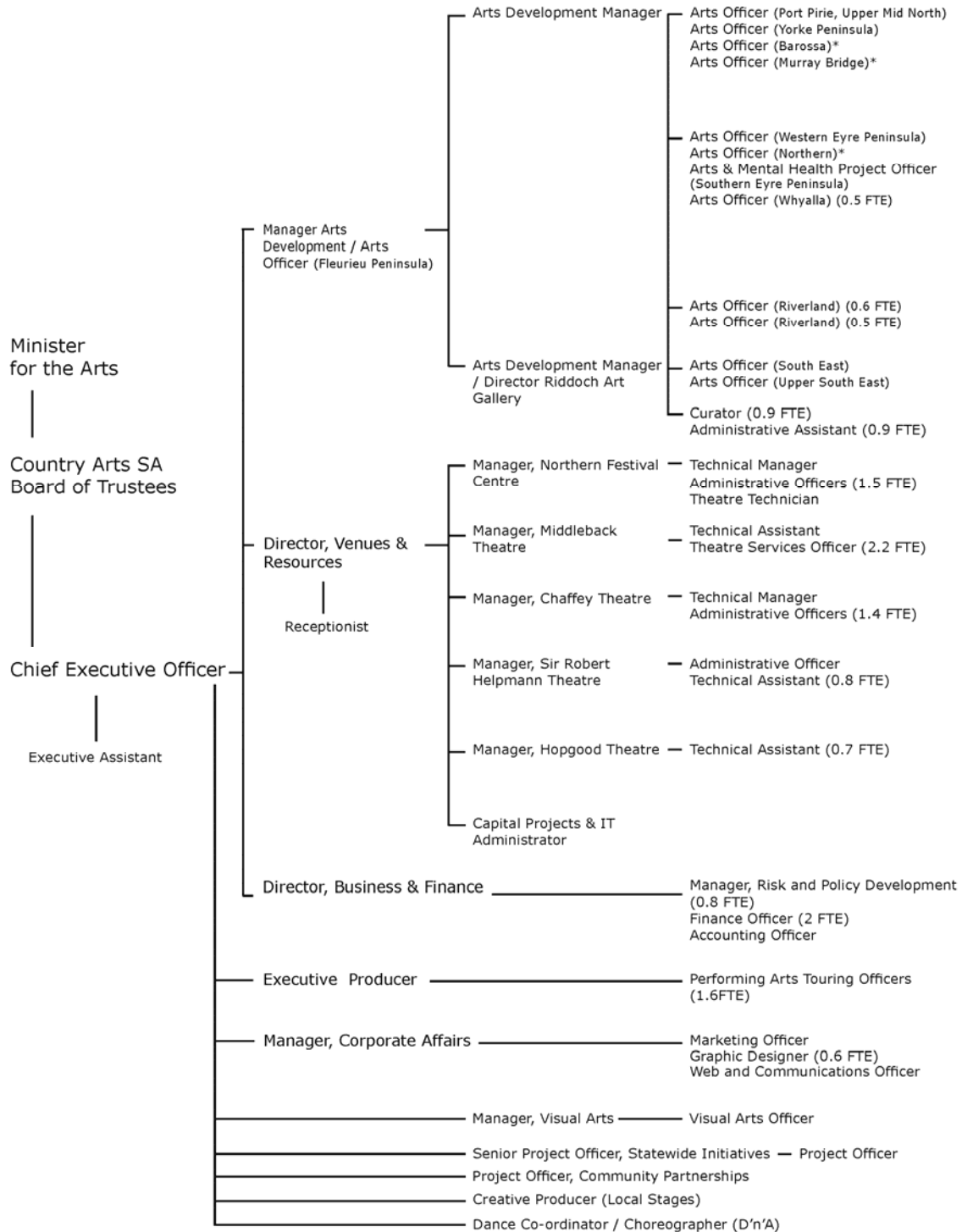


**Organisational Structure as at June 2010**

---

**Appendix E**

# organisational structure



\*officers are employed by Local Government with funding support from Country Arts SA



<b>Agency</b>	Country Arts SA
<b>Persons</b>	127
<b>FTE's</b>	64.94

<b>Gender</b>	<b>% Persons</b>	<b>% FTE</b>
Male	33.07	28.6
Female	66.93	71.4

<b>Number of Persons Separated from the agency during the last 12 months</b>	9
--	---

<b>Number of Persons Recruited to the agency during the 09/10 financial year</b>	35
--	----

<b>Number of Persons Recruited to the agency during the 09/10 financial year AND who were active/paid at June 2010</b>	18
--	----

<b>Number of Persons on Leave without Pay at 30 June 2010</b>	1
---	---

<b>NUMBER OF EMPLOYEES BY SALARY BRACKET</b>			
<b>Salary Bracket</b>	<b>Male</b>	<b>Female</b>	<b>Total</b>
\$0 - \$47,999	27	55	82
\$48,000 - \$60,999	9	20	29
\$61,000 - \$78,199	4	8	12
\$78,200 - \$98,499	1	2	3
\$98,500+	1	0	1
Total	42	85	127

**STATUS OF EMPLOYEES IN CURRENT POSITION**

<b>FTE's</b>					
<b>Gender</b>	<b>Ongoing</b>	<b>Short-term contract</b>	<b>Long-term contract</b>	<b>Casual</b>	<b>Total</b>
Male	2	3	9.84	3.73	18.57
Female	2.8	9.5	26.1	7.97	46.37
Total	4.8	12.5	35.94	11.7	64.94
<b>Persons</b>					
<b>Gender</b>	<b>Ongoing</b>	<b>Short-term contract</b>	<b>Long-term contract</b>	<b>Casual</b>	<b>Total</b>
Male	2	4	10	26	42
Female	3	11	28	43	85
Total	5	15	38	69	127

**NUMBER OF EXECUTIVES BY STATUS IN CURRENT POSITION, GENDER AND CLASSIFICATION**

Classification	Ongoing		Term Tenured		Term Untenured		Other (Inc. Casual)		Other (Invalid Combination – please correct)		Male	% of total Execs	Total		Total
	Male	Female	Male	Female	Male	Female	Male	Female	Male	Female			Female	% of total Execs	
EX-B	0	0	0	0	1	0	0	0	0	0	1	100	0	0	1
Total	0	0	0	0	1	0	0	0	0	0	1	100	0	0	1

**TOTAL DAYS LEAVE TAKEN - Needs to be divided by average FTE figure for the financial year for per FTE figure**

Leave Type	2009/10
1) Sick Leave Taken	272.78
2) Family Carer's Leave Taken	36.73
3) Miscellaneous Special Leave	23.5

<b>NUMBER OF EMPLOYEES BY AGE BRACKET BY GENDER</b>					
<b>Age Bracket</b>	<b>Male</b>	<b>Female</b>	<b>Total</b>	<b>% of Total</b>	
15 - 19	5	4	9	7.09	
20 - 24	3	9	12	9.45	
25 - 29	4	10	14	11.02	
30 - 34	2	10	12	9.45	
35 - 39	5	9	14	11.02	
40 - 44	4	7	11	8.66	
45 - 49	2	12	14	11.02	
50 - 54	4	8	12	9.45	
55 - 59	6	8	14	11.02	
60 - 64	4	5	9	7.09	
65+	3	3	6	4.72	
Total	42	85	127	100	

**NUMBER OF ABORIGINAL AND/OR TORRES STRAIT ISLANDER EMPLOYEES**

<b>Salary Bracket</b>	<b>ATSI staff</b>	<b>Total staff</b>	<b>% ATSI</b>
\$0 - \$47,999	0	82	0
\$48,000 - \$60,999	0	29	0
\$61,000 - \$78,199	0	12	0
\$78,200 - \$98,499	0	3	0
\$98,500+	0	1	0
Total	0	127	0

<b>CULTURAL AND LINGUISTIC DIVERSITY</b>				
<b>Name</b>	<b>Male</b>	<b>Female</b>	<b>Total</b>	<b>% of Agency</b>
Number of Employees born overseas	1	4	5	3.94
Number of Employees who speak language(s) other than English at home	2	4	6	4.72

**TOTAL NUMBER OF EMPLOYEES WITH ONGOING DISABILITIES (ACCORDING TO COMMONWEALTH DDA DEFINITION)**

	<b>Male</b>	<b>Female</b>	<b>Total</b>
Total	0	0	0

**TYPES OF DISABILITY (WHERE SPECIFIED)**

<b>Disability</b>	<b>Male</b>	<b>Female</b>	<b>Total</b>	<b>% of Agency</b>
Disability Requiring Workplace Adaptation	0	0	0	0
Physical	0	0	0	0
Intellectual	0	0	0	0
Sensory	0	0	0	0
Psychological/Psychiatric	0	0	0	0

**NUMBER OF EMPLOYEES USING VOLUNTARY FLEXIBLE WORKING ARRANGEMENTS BY GENDER**

<b>Leave Type</b>	<b>Male</b>	<b>Female</b>	<b>Total</b>
Purchased Leave	0	0	0
Flexitime	42	85	127
Compressed Weeks	0	0	0
Part-time	29	53	82
Job Share	0	0	0
Working from Home	0	2	2

**DOCUMENTED REVIEW OF INDIVIDUAL PERFORMANCE MANAGEMENT**

<b>Documented Review of Individual Performance Management</b>	<b>Total</b>
% Reviewed within the last 12 months	20
% review older than 12 months	0
% Not reviewed	80

**LEADERSHIP AND MANAGEMENT TRAINING EXPENDITURE**

<b>Training and Development</b>	<b>Total Cost</b>	<b>% of Total Salary Expenditure</b>
Total training and development expenditure	\$26,246.00	manual calculation – consult Circular 13
Total Leadership and Management Development	\$11,132.00	manual calculation – consult Circular 13

**ACCREDITED TRAINING PACKAGES BY EMPLOYEE TYPE**

Executive	1
Manager	11
Other	88

---

## **Trustees, board members and staff 2009-10**

---

**Appendix G**

## **Trustees, board members and staff**

### **Trustees**

Steve Grieve (Chair) (until 31/1/2010)  
Lew Owens (Chair) (until 31/1/2013)  
Allan Aughey (until 31/3/2011)  
Alexandrea Cannon (until 16/4/2011)  
Rene Ellis (until 30/4/2011)  
Mardi Jennings (until 31/3/2011)  
Anne Levy (until 30/4/2010)  
Dianne McEwen (until 31/1/2012)  
Winnie Pelz (until 31/3/2011)  
Timothy Scholz (until 31/3/2011)  
Stan Thomson (until 31/12/2009)  
Sandra Winter-Dewhirst (13/5/2012)

### **Directorate**

#### **Staff**

*Chief Executive Officer*  
Ken Lloyd

*Executive Secretary*  
Christine Hughes

*Director, Venues & Resources*  
Stephen Saffell

*Manager Arts Development*  
Imelda Rivers

*Director, Business & Finance*  
Tina Turci

*Manager, Corporate Affairs*  
Kylie Kerrigan

*Manager, Performing Arts Touring*  
Anthony Peluso

*Manager, Visual Arts*  
Rob Johnston

*Senior Project Officer*  
Jo Pike

*Creative Producer*  
Steven Mayhew

*Information Technology Administrator*  
Raymond Ellison

*Marketing Officer*  
Simone Hawkins (until 21/6/2010)

*Venues Coordinator*  
Sussan Baldwin

*Performing Arts Touring Officers*  
Sarah Ferguson  
Sue Marley

*Visual Arts Officers*  
Katinka Gleim

*Graphic Designer*  
Marieke Hart (maternity leave from  
8/12/2009)  
Beth Wuttke (12/1/2010)

*Communications Officer*  
Pip Gare (until 29/1/2010)

*Community Partnerships Project Officer*  
Merilyn Cox

*Accounting Officer*  
Josephine Robinson

*Administrative Services Officer - Finance*  
Susan Altamura  
Naomi Barrett

*Administrative Services Officer*  
Lan Tran (until 18/12/2009)  
Lauren Grant (14/9/2009 – 4/6/2010)

*Arts Programs Administration Officer*  
Naomi Gordon

*Choreographer*  
Richard Seidel

**Casuals**  
Rosalie Ahern

**Regional Arts Australia**  
*Executive Director*  
Ruth Smiles

*Project Officer*  
Joanne McDonald

**Riddoch Art Gallery**  
*Director, Riddoch Gallery*  
Lucia Pichler

*Administration Officer*  
Carly Jakutavicius (LWOP 15/9/2010 –  
5/2/2010)  
Chris Pudney (from 25/8/2009)

*Collections Officer*  
Jacqueline Porter

### **Central Region**

#### **Staff**

*Arts Development Manager*  
Samantha Yates

*Manager, Northern Festival Centre*  
Jenny Stephenson

*Arts Officer Mid North & Southern Flinders*  
Kirstie Jamieson

*Arts Officer Yorke Peninsula*  
Daryl Parker (until 31/12/2009)

*Arts Officer Murraylands*  
Dianne Gordon (Murray Bridge Council employee)

*Technical Manager*  
Graham Johnston

*Theatre Services Officers*  
Meegan McMahon  
Sharon Wauchope

*Theatre Technician*  
Paul Schrader

#### **Casuals**

Andrew Agars  
Mark Allen  
Peter Allen  
Billie Blieschke  
Robyn Dunn  
Alan Fricker  
Lynnette Hancock  
Pamela Harmer  
Christopher Hincks  
Adam Hodgson  
Kirsty Hoile  
Michelle Johnson  
Morgan Joyce  
Christine Kent  
Jared Kent  
David Kent  
Victor Knauerhase  
Matthew Kretschmer  
Pauline Matthews  
Lesley Patrick  
Lynette Petagna  
Dean Schrader

Allan Sedunary  
Grant Stephenson  
Adrian Talent  
Richard Van Giesen  
Marion Williams  
Frances Woolford  
Sharon Yendall

### **Riverland/Mallee Region**

#### **Staff**

*Arts Development Manager*  
Danyon De Buell (until 25/9/2009)

*Manager, Chaffey Theatre*  
Sharlene Martin

*Arts Officer Riverland*  
Rebecca Farrant  
Jacob Mangelsdorf (from 1/2/2010)

*Technical Manager*  
Terence Marter

*Theatre Services Officers*  
Lara Vallelonga (maternity, LSL, LWOP from 8/2/2010)  
Sophie Cass

#### **Casuals**

Cassie Andrews  
Colin Beldi  
Steven Drogemuller  
Neil Drogemuller  
Phillip Frahn  
Tarquin Frahn  
Carlie Germeroth-Campain  
Petrina Hale  
Gaynor Harryman  
Alysha Herrmann  
Nicole John  
Paul Kaesler  
Dwayne Lindsay  
Jeffery Matthews  
Mark Nelson  
Heidi Obst  
Gregory Reeks  
Jonathan Skewes  
Michelle Storry  
Michelle Storry  
Matt Storry  
Alexander Suchenko  
Emma Vallelonga  
Bradley Voss

## **South East Region**

### **Staff**

*Arts Development Manager*  
Lucia Pichler

*Manager, Sir Robert Helpmann Theatre*  
Frank Morello

*Arts Officers Tatiara*  
Tyson Brown (until 23/6/2010)

*Arts Officer Mid South East & South East Coast*  
Dagny Strand

*Theatre Services Officer*  
Johann Smith

### **Casuals**

Fay Cakebread  
Betty Clayfield  
Sally Czerwonka  
Debbie Dalby  
Hayley Dean  
Kyle Gleed  
James Hunt  
Marcus Jones  
Dianne Kember  
Karen Kennedy  
Barry McNally  
Suzanne Panther  
Joel Panther  
Joanne Ratsch  
Barbara Robinson  
Frederick Robinson  
Janice Sandercock  
John Sandercock  
Hilton Smith  
Aaron Uthenwoldt  
Genevieve Vorwerk

## **Western Region**

### **Staff**

*Arts Development Manager*  
Sue Dubois (until 25/9/2010)

*Manager, Middleback Theatre*  
Ryan Sutherland

*Theatre Services Officer*  
Narelle Brine (maternity leave, LWOP from 7/5/2010)  
Fiona Moellner (from 10/5/2010)

*Arts Officer Western Eyre Peninsula*  
Jayne Holland

*Arts Officer Whyalla*  
Kirsty Connor

*Arts Officer Northern*  
Sara Twigg- Patterson (until 16/10/2009)

### **Casuals**

Philip Abbott  
Kirsty Adams  
Corey Beinke-Heath  
Michael Beven  
Michelle Boehm  
Leonard Clapp  
Stephen Coles  
Caitlin Collison  
Luisa Damiani  
Brett Geihlich  
Barry Hammond  
Jordon How  
Glen Jeary  
Rachael Macdonald  
Aaron Moellner  
Katrina Presch  
Melissa Schenck  
Krystal Sheely  
John Thwaites  
Ryan Wakeling  
Evette Wakeling

### **Noarlunga**

*Manager, Hopgood Theatre*  
Sussan Baldwin

*Technical Manager*  
Rodney Larcombe

### **Casuals**

Emma Bargery  
Thomas Bayford  
Trevor Beavis  
Braden Bosustow  
Clinton Camac  
Alexander Champion  
Maria Davis  
Andrea Ellison  
Simon Ellison  
Joanne Evans  
Lance Fakes  
Sandra Folkmer  
Anna Folkmer  
Elizabeth Folkmer  
Scott Larcombe

---

Michael MacDonald  
Joshua McGough  
Benjamin Morriss  
Timothy Osborne  
Josh Smart  
Irene Tunis  
Evette Wolf



**country..  
arts sa**

Country Arts SA  
2 McLaren Parade  
Port Adelaide SA 5015  
ABN 63 908 129 329  
Ph: (08) 8444 0400  
Fax: (08) 8444 0499  
Email: [email@countryarts.org.au](mailto:email@countryarts.org.au)  
[www.countryarts.org.au](http://www.countryarts.org.au)



**Australian Government**  
**Playing Australia**



Australian Government



*rex.*  
**Regional Express**  
13 17 13 - [www.regionalexpress.com.au](http://www.regionalexpress.com.au)



Australian Government



Government of South Australia

**THE VISUAL ARTS AND CRAFT STRATEGY**



**Australian Government**  
**Regional Arts Fund**