



Design Now

An exciting exhibition designed especially for upper primary/secondary students and young adults involved in art/design studies or learning to use design-based strategies as a way of shaping their world.

SACE Art/Design



Design Now offers extensive resources and insights for students undertaking Visual Art and Design studies at SACE 1 and SACE 2 levels, particularly in developing and extending students'

- skills and knowledge, of materials, processes, and resources, required to develop an idea from conception through to planning, completion and evaluation
- critical understanding of contemporary visual art and design through investigation, and practice
- critical understanding of the role of contemporary design and artist/designers in the community
- understanding of the visual arts from a range of social and cultural perspectives and contexts



Below are just a few suggestions to link Design Now with the Senior School curriculum

Stage 1 - DESIGN

- Practical Work
- Contemporary Practices in Design
- Design and Culture

Top: Amanda King, *Soft Slice 1 & 2* (detail), 2007 blown and cold worked glass, 170 x170x70 and 180x180x60
Photograph: Grant Hancock. Middle: Amanda King in the studio, Bottom: Computer with image of *garp* designs

In all three components of the course, the practical examples and visual support materials in Design Now can be used to inspire students to create their own brief for a practical work and to use the exhibition as a source for a Contemporary Practice or Design and Culture assignment.

Stage 2 - VISUAL ARTS STUDIES

Section I: Visual Arts Practice

The exhibition panels give a concise insight into the development of the artist/designers' ideas, through their drawings, maquettes and personal notes.

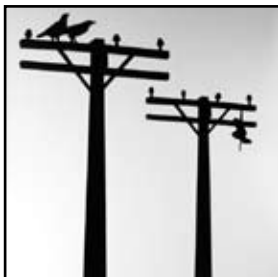
Not only does the evidence of the artists' journey encourage good practice in students, but also reveals something about the diversity of subjects and influences that inspire artists to create.

SACE Art/Design Page 1 of 3

This **Design Now** Learning Connections resource has been downloaded from www.countryarts.org.au where there are more online resources available for this and other Country Arts SA touring exhibitions.



Learning Connections is an arts access program developed by Country Arts SA for regional South Australian school communities. Its broad objective is to encourage and support schools' access to touring art exhibitions. It offers teachers specific resources and strategies for using exhibitions as curriculum resource and to encourage meaningful encounters for students with art and design from the earliest years.



Section 2: The Study of Visual Arts

As all the artworks in the exhibition have been created recently, they could be used as resource material for a number of the topics with a contemporary focus.

Part 2: Contemporary Focus

Topic 1: The Roles of Visual Artists in Society

A number of the artist/designers are outspoken about the social/political contexts of their work.

Topic 2: Methods and Materials

Within the four disciplines of metal, furniture, glass and ceramics, materials are explored and crafted in a multitude of ways.

Topic 3: Form and Function

The artist/designers discuss and demonstrate in detail the connection between the final form of their piece of furniture or jewellery and its intended function.



Top: David Potts, *Stoby Pole (The Hook Ups and Birds on Patrol (detail), 2007* mdf, satin black paint, 1950x900x25 (vertical unit) 570x570x25 (base), Bottom: David Potts in the studio

Part 3: Student Choice Topic

There are a number of topics which could be studied incorporating Design Now as an investigative resource.

Topic 2: Methods and Media

Topic 3: Form and Function

Topic 9: Ecologically Conscious Design

Topic 11: Student –negotiated Topic

The Design Now exhibition content raises as many questions as it answers in relation to the role of the designer as an artist or the artist as a designer. This question could be taken on as a Student Choice Topic by a student starting with a visit to the exhibition and further research on line and at JamFactory.



Mercedes Mangnall, *Pink Bear with skulls 2007*, stoneware, enamel paint 630x220x200, Photograph Mick Bradley. Above, Mercedes Mangnall in the studio.

This **Design Now** Learning Connections resource has been downloaded from www.countryarts.org.au where there are more online resources available for this and other Country Arts SA touring exhibitions.



Stage 2 - DESIGN PRACTICAL

Section 1: Practical Work, and Methods and Materials Folio

The diverse range of topics and techniques used by the 12 artist/designers will provide inspiration for students, not only as possible ideas for a design brief, but also materials and technique ideas for their Methods and Materials Folio.

Section 2: Topics

Students could use *Design Now* as a source for the investigation of several of the topics listed below:

Topic 3: Form and Function of Product Design

Products for decoration and for the home have been presented in this exhibition from initial ideas to completed product.

Topic 5: A Designer's Work

There is ample opportunity for students to research any of the artist/designers in the exhibition from first hand contact with the works, from the insight material embedded within the exhibition and access to online resources.

Topic 6: Design of an Exhibition

Design elements of the *Design Now* exhibition could be researched with both the local gallery director and the curator of the exhibition.

Topic 9: Design in the Domestic Environment

Examples of household products and decorative items in the exhibition could be used as examples for analysis in this topic.



Top: John Quan *Woven Structure*, 2007 laminated European beech veneer, 470x470x470, Photograph Grant Hancock, Middle: John Quan in the studio, Bottom: *Woven Structure* under construction

Stage 2 - ART PRACTICAL

Section 1: Art Practice

Practical Studies

Not only does the *Design Now* exhibition demonstrate good developmental practice, it also provides a diverse range of examples of ideas that have inspired the 12 artist/designers in the exhibition, from nature to social and cultural issues.

Practical Extension

The artists/designers in this exhibition articulate and demonstrate a wide variety of experimental techniques in a diversity of media which could be sourced as examples for students' Personal Extension folio.

Section 2: Topics

Topic 2: Investigation of a Career related to Art
Students could select from the 12 artist/designers in the exhibition and research their professional profiles (including training) and access selected the artists' web-sites.

Topic 6: Art in the Age of Technology
A number of works demonstrate applications of current and traditional technologies

Topic 7: An Artist's Work
The exhibition insight and online resource material provide excellent opportunities for students studying this topic.

SACE Art/Design Page 3 of 3

This **Design Now** Learning Connections resource has been downloaded from www.countryarts.org.au where there are more online resources available for this and other Country Arts SA touring exhibitions.



Learning Connections is an arts access program developed by Country Arts SA for regional South Australian school communities. Its broad objective is to encourage and support schools' access to touring art exhibitions. It offers teachers specific resources and strategies for using exhibitions as curriculum resource and to encourage meaningful encounters for students with art and design from the earliest years.